



320

Hydraulic Excavator

Technical Specifications

Configurations and features may vary by region. Please consult your Cat® dealer for availability in your area.

Table of Contents

Specifications	2
Engine	2
Swing Mechanism	2
Weights	2
Track	2
Drive	2
Hydraulic System	2
Service Refill Capacities	2
Standards	2
Sound Performance	2
Operating Weights and Ground Pressures	3
Major Component Weights	4
Dimensions	5
Working Ranges	6
Bucket Specifications and Compatibility	8
Attachments Offering Guide	9
Standard and Optional Equipment	10
Dealer Installed Kit and Attachments	12
Cab Options	13
320 Environmental Declaration	14

320 Hydraulic Excavator Specifications

Engine

Engine Model	Cat® C4.4	
Net Power		
ISO 9249	128.5 kW	172 hp
ISO 9249 (DIN)	175 hp (metric)	
Engine Power		
ISO 14396	129.4 kW	174 hp
ISO 14396 (DIN)	176 hp (metric)	
Bore	105 mm	4 in
Stroke	127 mm	5 in
Displacement	4.40 L	269 in ³
Biodiesel Capability	Up to B20 ⁽¹⁾	

- The 320 meets China Nonroad Stage IV emission standards.
- Recommended for use up to 4500 m (14,764 ft) altitude with engine power derate above 3000 m (9,842.5 ft).
- Advertised power is tested per the specified standard in effect at the time of manufacture.
- Net power advertised is the power available at the flywheel when the engine is equipped with fan, air intake system, exhaust system and alternator.
- Engine speed at 2,000 rpm.

⁽¹⁾Cat diesel engines are required to use ULSD (ultra-low sulfur diesel fuel with 15 ppm of sulfur or less) or ULSD blended with the following lower-carbon intensity fuels up to:

- ✓ 20% biodiesel FAME (fatty acid methyl ester)*
- ✓ 100% renewable diesel, HVO (hydrogenated vegetable oil) and GTL (gas-to-liquid) fuels

Refer to guidelines for successful application. Please consult your Cat dealer or “Caterpillar Machine Fluids Recommendations” (SEBU6250) for details.

**Engines with no aftertreatment devices can use higher blends, up to 100% biodiesel.*

Swing Mechanism

Swing Speed	11.25 rpm	
Maximum Swing Torque	82 kN·m	60,300 lbf·ft

Weights

Operating Weight	21 700 kg	47,800 lb
------------------	-----------	-----------

- HD Reach boom, HD R2.9 (9'6") stick, HD 1.19 m³ (1.56 yd³) bucket, 600 mm (24") triple grouser shoes, 4200 kg (9,300 lb) counterweight.

Track

Standard Track Shoe Width	600 mm	24 in
Number of Shoes (each side)	49	
Number of Track Rollers (each side)	8	
Number of Carrier Rollers (each side)	2	

Drive

Gradeability	35°/70%	
Maximum Travel Speed	5.7 km/h	3.5 mph
Maximum Drawbar Pull	205 kN	45,996 lbf

Hydraulic System

Main System – Maximum Flow – Implement	429 L/min (215 × 2 pumps)	113 gal/min (57 × 2 pumps)
Maximum Pressure – Equipment – Normal	35 000 kPa	5,075 psi
Maximum Pressure – Equipment – Auto Dig Boost	38 000 kPa	5,510 psi
Maximum Pressure – Travel	34 300 kPa	4,974 psi
Maximum Pressure – Swing	27 500 kPa	3,998 psi
Boom Cylinder – Bore	120 mm	5 in
Boom Cylinder – Stroke	1260 mm	50 in
Stick Cylinder – Bore	140 mm	6 in
Stick Cylinder – Stroke	1504 mm	59 in
Bucket Cylinder – Bore	120 mm	5 in
Bucket Cylinder – Stroke	1104 mm	43 in

Service Refill Capacities

Fuel Tank Capacity	345 L	86.6 gal
Cooling System	25 L	6.6 gal
Engine Oil	15 L	4.0 gal
Swing Drive	12 L	3.2 gal
Final Drive (each)	5 L	1.3 gal
Hydraulic System (including tank)	234 L	61.8 gal
Hydraulic Tank	115 L	30.4 gal

Standards

Brakes	ISO 10265:2008
Cab/ROPS	ISO 12117-2:2008
Cab/FOGS (optional)	ISO 10262:1998 Level II

Sound Performance

ISO 6395:2008 (external)	99 dB(A)
ISO 6396:2008 (inside cab)	70 dB(A)

- When properly installed and maintained, the cab offered by Caterpillar, when tested with doors and windows closed according to ANSI/SAE J1166 OCT98, meets OSHA and MSHA requirements for operator sound exposure limits in effect at time of manufacture.
- Hearing protection may be needed when operating with an open operator station and cab (when not properly maintained or doors/windows open) for extended periods or in a noisy environment.

320 Hydraulic Excavator Specifications

Operating Weights and Ground Pressures

Base Machine Configurations	600 mm (24") Triple Grouser Shoes				600 mm (24") Double Grouser Shoes			
	Weight		Ground Pressure		Weight		Ground Pressure	
	kg	lb	kPa	psi	kg	lb	kPa	psi
Base Frame with Track Rollers and Carrier Rollers								
3700 kg (8,160 lb) Counterweight + Long Undercarriage Base Machine								
HD Reach Boom + HD R2.9 (9'6") Stick + 1.19 m ³ (1.56 yd ³) HD Bucket	21 200	46,700	44.1	6.4	21 600	47,600	44.9	6.5
4200 kg (9,300 lb) Counterweight + Long Undercarriage Base Machine								
HD Reach Boom + HD R2.9 (9'6") Stick + 1.19 m ³ (1.56 yd ³) HD Bucket	21 700	47,800	45.1	6.5	22 100	48,700	46.0	6.7

All operating weights include a 90% fuel tank with 75 kg (165 lb) operator.

320 Hydraulic Excavator Specifications

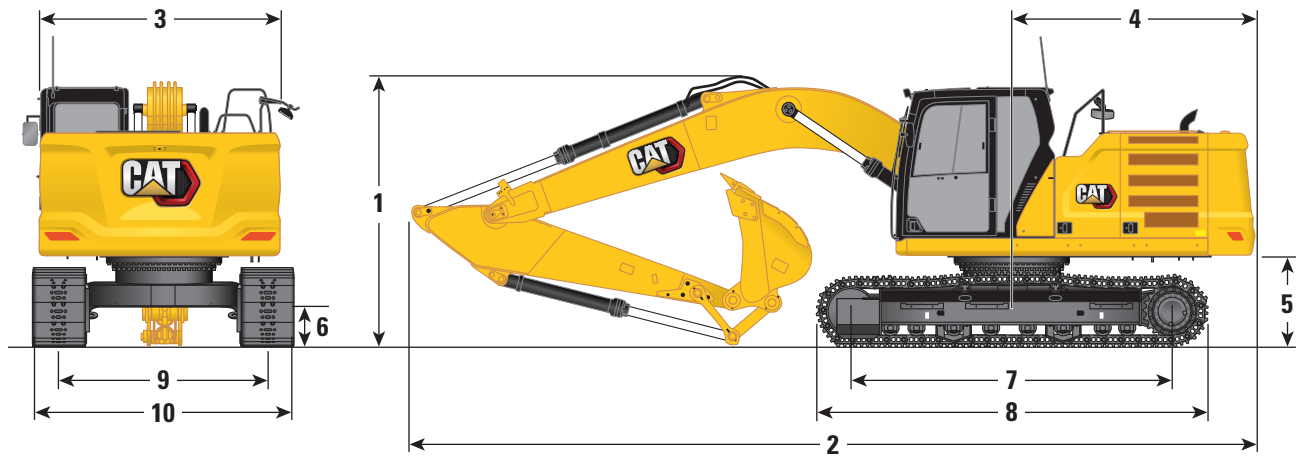
Major Component Weights

	kg	lb
Base Machine (with 3700 kg [8,200 lb] counterweight, standard swing frame, standard base frame with HD track rollers and standard carrier rollers for long undercarriage, without boom cylinders – does not include 90% fuel and 75 kg [165 lb] operator)	13 930	30,700
Base Machine (with 4200 kg [9,300 lb] counterweight, semi-HD swing frame, standard base frame with HD track rollers and standard carrier rollers for long undercarriage, without boom cylinders – does not include 90% fuel and 75 kg [165 lb] operator)	14 460	31,900
Base Machine (with 4700 kg [10,440 lb] counterweight, semi-HD swing frame, standard base frame with HD track rollers and standard carrier rollers for long undercarriage, without boom cylinders – does not include 90% fuel and 75 kg [165 lb] operator)	14 960	33,000
Track Shoes:		
600 mm (24") Width, 10 mm (0.39") Thick Triple Grouser Track Shoes	2690	5,900
600 mm (24") Width, 13 mm (0.51") Thick Double Grouser Track Shoes	3080	6,800
Two Boom Cylinders	340	750
Weight of 90% Fuel Tank and 75 kg (165 lb) Operator	310	680
Counterweights:		
3700 kg (8,200 lb) Counterweight	3700	8,200
4200 kg (9,300 lb) Counterweight	4200	9,300
4700 kg (10,400 lb) Counterweight (Super Long Reach only)	4700	10,400
Swing Frames:		
Standard Swing Frame	1910	4,210
Semi-HD Swing Frame (Super Long Reach only)	1940	4,280
Undercarriage:		
Standard Base Frame with HD Track Rollers and Standard Carrier Rollers	4390	9,700
HD Base Frame with SD Track Rollers and Standard Carrier Rollers	4440	9,790
Booms (including lines, pins, stick cylinder):		
HD Reach Boom 5.7 m (18'8")	1900	4,200
Super Long Reach Boom 8.85 m (29'0")	2170	4,800
Sticks (including lines, pins, bucket cylinder, bucket linkage):		
HD Reach Stick R2.9B1 (9'6")	1110	2,400
HD Reach Stick R2.5B1 (8'2")	1060	2,300
Super Long Reach Stick 6.28A (20'7")	1340	3,000
Buckets (without linkage):		
1.0 m³ (1.31 yd³) HD	890	2,000
1.0 m³ (1.31 yd³) SD	970	2,100
1.14 m³ (1.14 yd³) GD	820	1,800
1.19 m³ (1.56 yd³) HD	940	2,100
0.53 m³ (0.69 yd³) GD	410	900
0.57 m³ (0.74 yd³) Ditch Cleaning	390	900

320 Hydraulic Excavator Specifications

Dimensions

All dimensions are approximate and may vary depending on bucket selection.



Boom Options

HD Reach Boom
5.7 m (18'8")

SLR Boom
8.85 m (29'0")

Stick Options

HD Reach Sticks
R2.9B1 (9'6")

R2.5B1 (8'2")

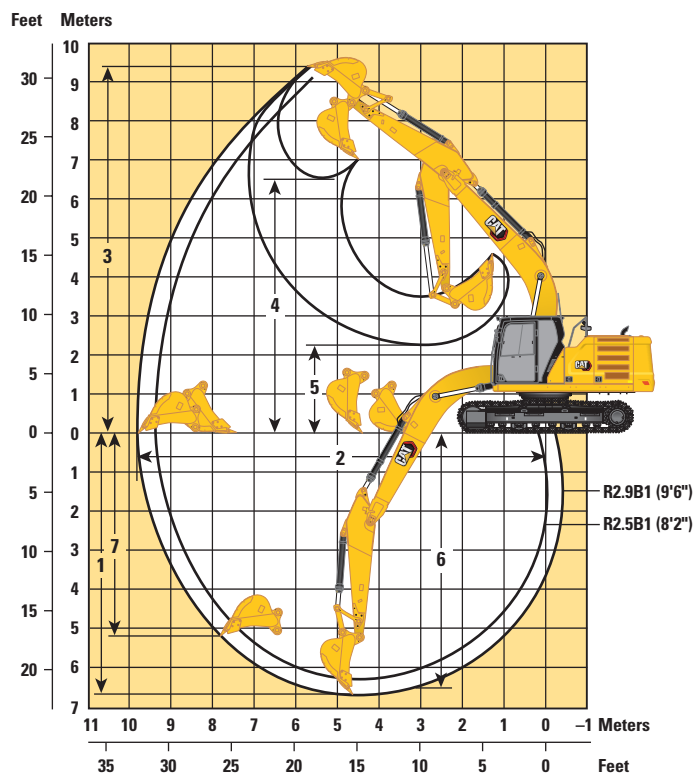
SLR Stick
6.28A (20'7")

1 Machine Height:							
Top of Cab Height	2960 mm	9'9"	2960 mm	9'9"	2960 mm	9'9"	
Top of FOGS Height	3100 mm	10'2"	3100 mm	10'2"	3100 mm	10'2"	
Handrails Height	2950 mm	9'8"	2950 mm	9'8"	2950 mm	9'8"	
With Boom/Stick/Bucket Installed	3160 mm	10'4"	3080 mm	10'1"	3190 mm	10'5"	
With Boom/Stick Installed	2910 mm	9'7"	2910 mm	9'7"	3070 mm	10'1"	
With Boom Installed	2480 mm	8'2"	2480 mm	8'2"	2650 mm	8'8"	
2 Machine Length:							
With Boom/Stick/Bucket Installed	9530 mm	31'3"	9530 mm	31'3"	12 750 mm	41'10"	
With Boom/Stick Installed	9500 mm	31'2"	9500 mm	31'2"	12 760 mm	41'10"	
With Boom Installed	8450 mm	27'9"	8450 mm	27'9"	8920 mm	29'3"	
3 Upperframe Width	2780 mm	9'1"	2780 mm	9'1"	2780 mm	9'1"	
4 Tail Swing Radius	2830 mm	9'3"	2830 mm	9'3"	2830 mm	9'3"	
5 Counterweight Clearance	1050 mm	3'5"	1050 mm	3'5"	1050 mm	3'5"	
6 Ground Clearance	470 mm	1'7"	470 mm	1'7"	470 mm	1'7"	
7 Length to Center of Rollers	3650 mm	12'0"	3650 mm	12'0"	3650 mm	12'0"	
8 Track Length	4450 mm	14'7"	4450 mm	14'7"	4450 mm	14'7"	
9 Track Gauge	2380 mm	7'9"	2380 mm	7'9"	2380 mm	7'9"	
10 Undercarriage Width:							
600 mm (24") Shoes	2980 mm	9'9"	2980 mm	9'9"	2980 mm	9'9"	
Bucket Type	HD		HD		GD		
Bucket Capacity	1.19 m ³	1.56 yd ³	1.19 m ³	1.56 yd ³	0.53 m ³	0.69 yd ³	
Bucket Tip Radius	1570 mm	5'2"	1570 mm	5'2"	1230 mm	4'0"	

320 Hydraulic Excavator Specifications

Working Ranges

All dimensions are approximate and may vary depending on bucket selection.



Boom Option

HD Reach Boom
5.7 m (18'8")

Stick Options

HD Reach Sticks

R2.9B1 (9'6")

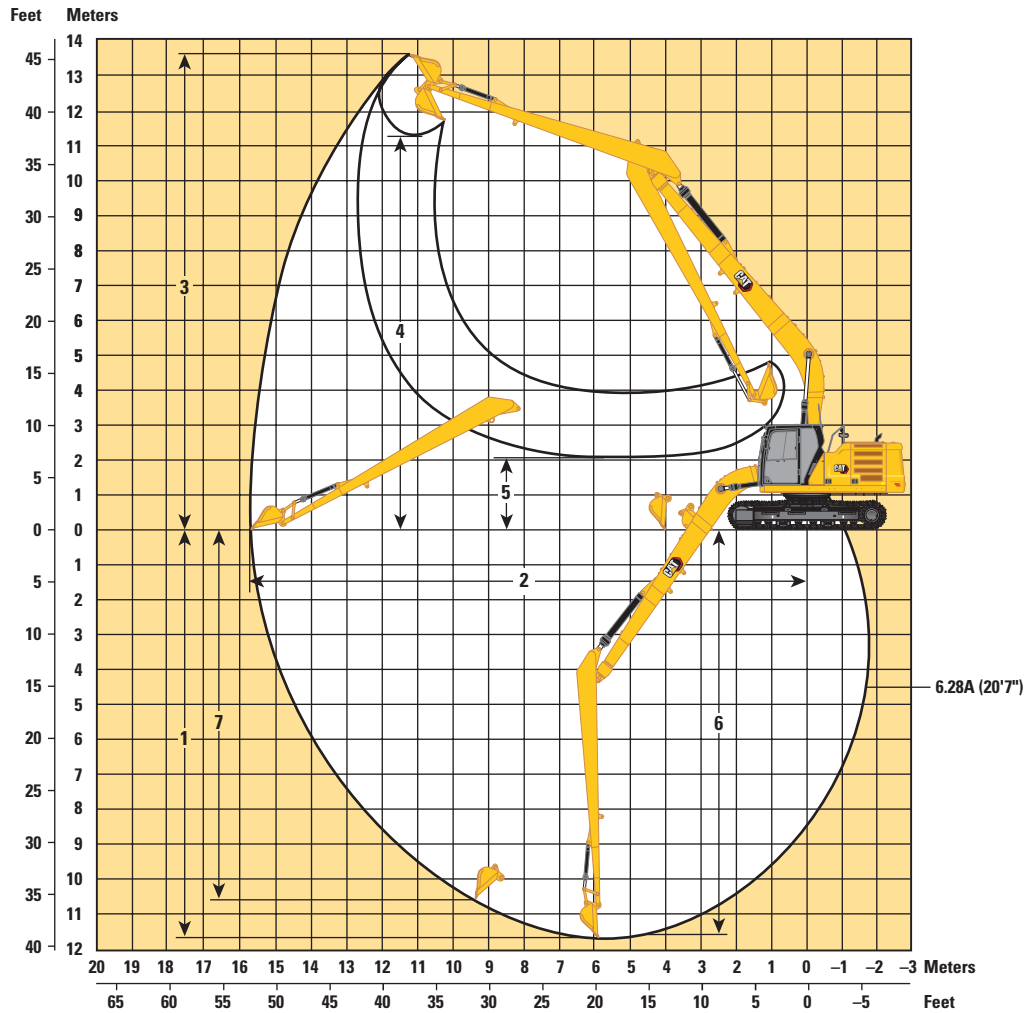
R2.5B1 (8'2")

1 Maximum Digging Depth	6720 mm	22'1"	6300 mm	20'8"
2 Maximum Reach at Ground Line	9860 mm	32'4"	9470 mm	31'1"
3 Maximum Cutting Height	9370 mm	30'9"	9170 mm	30'1"
4 Maximum Loading Height	6490 mm	21'4"	6290 mm	20'8"
5 Minimum Loading Height	2170 mm	7'1"	2590 mm	8'6"
6 Maximum Depth Cut for 2440 mm (8'0") Level Bottom	6550 mm	21'6"	6110 mm	20'1"
7 Maximum Vertical Wall Digging Depth	5190 mm	17'0"	4800 mm	15'9"
Bucket Digging Force (ISO)	150 kN	33,811 lbf	150 kN	33,811 lbf
Stick Digging Force (ISO)	106 kN	23,911 lbf	118 kN	26,491 lbf
Bucket Digging Force (ISO) – Auto Dig Boost	163 kN	36,709 lbf	163 kN	36,709 lbf
Stick Digging Force (ISO) – Auto Dig Boost	115 kN	25,960 lbf	128 kN	28,762 lbf
Bucket Type	HD		HD	
Bucket Capacity	1.19 m³	1.56 yd³	1.19 m³	1.56 yd³
Bucket Tip Radius	1570 mm	5'2"	1570 mm	5'2"

320 Hydraulic Excavator Specifications

Working Ranges

All dimensions are approximate and may vary depending on bucket selection.



Boom Option

SLR Boom
8.85 m (29'0")

Stick Option

SLR Stick
6.28A (20'7")

1 Maximum Digging Depth	11 690 mm	38'4"
2 Maximum Reach at Ground Line	15 730 mm	51'7"
3 Maximum Cutting Height	13 610 mm	44'8"
4 Maximum Loading Height	11 290 mm	37'0"
5 Minimum Loading Height	2080 mm	6'10"
6 Maximum Depth Cut for 2440 mm (8'0") Level Bottom	11 590 mm	38'0"
7 Maximum Vertical Wall Digging Depth	10 560 mm	34'8"
Bucket Digging Force (ISO)	60 kN	13,549 lbf
Stick Digging Force (ISO)	49 kN	10,935 lbf
Bucket Type	GD	
Bucket Capacity	0.53 m ³	0.69 yd ³
Bucket Tip Radius	1230 mm	4'0"

320 Hydraulic Excavator Specifications

Bucket Specifications and Compatibility

	Linkage	Width		Capacity		Weight		Fill	Counterweight				
									3700 kg (8,200 lb)		4200 kg (9,300 lb)		4700 kg (10,400 lb)
		HD R2.5 (8'2")	HD R2.9 (9'6")	HD R2.5 (8'2")	HD R2.9 (9'6")	6.28A (20'7")							
Pin-On (No Quick Coupler)													
Utility Duty	B	1150	46	0.90	1.18	725	1,599	100	●	●	●	●	
	B	1250	50	1.00	1.31	758	1,672	100	●	⊙	●	●	
General Duty Excavation	B	1150	46	0.90	1.18	758	1,671	100	●	●	●	●	
	B	1250	50	1.00	1.31	792	1,747	100	●	⊙	●	●	
	B	1400	56	1.14	1.49	858	1,891	100	⊙	X	●	X	
Heavy Duty	B	1050	43	1.00	1.31	884	1,948	100	●	⊙	●	●	
	B	1200	49	1.19	1.56	955	2,105	100	⊖	⊖	⊙	⊖	
	B	1350	54	1.38	1.81	1018	2,244	100	○	X	⊖	X	
Severe Duty	B	1100	43	1.00	1.31	965	2,128	90	●	⊙	●	●	
	B	1250	49	1.19	1.56	1063	2,343	90	⊙	⊖	⊙	⊙	
	B	900	36	0.79	1.03	853	1,881	90	●	●	●	●	
General Duty	312, A	900	36	0.53	0.69	403	888	100					◇
Ditch Cleaning	312, A	1200	48	0.57	0.74	386	851	100					◇
Maximum load with pin-on (payload + bucket)								kg	2955	2735	3145	2915	880
								lb	6,515	6,030	6,934	6,426	1,940
With Cat Pin Grabber Coupler													
Utility Duty	B	1150	46	0.90	1.18	725	1,599	100	●	⊙	●	●	
	B	1250	50	1.00	1.31	758	1,672	100	⊙	⊖	●	⊙	
General Duty Excavation	B	1150	46	0.90	1.18	758	1,671	100	⊙	⊙	●	⊙	
	B	1250	50	1.00	1.31	792	1,747	100	⊙	⊖	⊙	⊙	
	B	1400	56	1.14	1.49	858	1,891	100	⊖	○	⊖	⊖	
Heavy Duty	B	1050	43	1.00	1.31	884	1,948	100	⊖	⊖	⊙	⊖	
	B	1200	49	1.19	1.56	955	2,105	100	○	○	⊖	○	
	B	1350	54	1.38	1.81	1018	2,244	100	◇	◇	○	◇	
Severe Duty	B	1100	43	1.00	1.31	965	2,128	90	⊙	⊖	●	⊙	
	B	1250	49	1.19	1.56	1063	2,343	90	○	○	⊖	○	
	B	900	36	0.79	1.03	853	1,881	90	●	●	●	●	
Maximum load with coupler (payload + bucket)								kg	2533	2314	2772	2539	
								lb	5,585	5,102	6,110	5,597	

The above loads are in compliance with hydraulic excavator standard EN474 5:2006 + A3:2013, they do not exceed 87% of hydraulic lifting capacity or 75% of tipping capacity with front linkage fully extended at ground line with bucket curled.

Capacity based on ISO 7451:2007.

Bucket weight with General Duty tips.

Maximum Material Density:

- 2100 kg/m³ (3,500 lb/yd³)
- ⊙ 1800 kg/m³ (3,000 lb/yd³)
- ⊖ 1500 kg/m³ (2,500 lb/yd³)
- 1200 kg/m³ (2,000 lb/yd³)
- ◇ 900 kg/m³ (1,500 lb/yd³)
- X Not Recommended

Caterpillar recommends using appropriate work tools to maximize the value customers receive from our products. Use of work tools, including buckets, which are outside of Caterpillar's recommendations or specifications for weight, dimensions, flows, pressures, etc. may result in less-than-optimal performance, including but not limited to reductions in production, stability, reliability, and component durability. Improper use of a work tool resulting in sweeping, prying, twisting and/or catching of heavy loads will reduce the life of the boom and stick.

320 Hydraulic Excavator Specifications

Attachments Offering Guide

PIN-ON ATTACHMENTS

Counterweight		3700 kg (8,200 lb)		4200 kg (9,300 lb)	
Boom Type		HD Reach		HD Reach	
Stick Length		HD R2.5 (8'2")	HD R2.9 (9'6")	HD R2.5 (8'2")	HD R2.9 (9'6")
Hydraulic Hammers	H115 S	✓	✓	✓	✓
	H120 GC	✓	✓	✓	✓
	H120 GC Side Mount	✓	✓	✓	✓
	H120 GC S	✓	✓	✓	✓
	H120 S	✓	✓	✓	✓
	H130 GC	✓	✓	✓	✓
	H130 GC S	✓	✓	✓	✓
	H130 S	✓	✓	✓	✓
	H140 Side Mount	✓	✓	✓	✓
Vibratory Plate Compactors	CVP110	✓	✓	✓	✓

320 Standard and Optional Equipment

Standard and Optional Equipment

Standard and optional equipment may vary. Consult your Cat dealer for details.

	Standard	Optional		Standard	Optional
ENGINE			UNDERCARRIAGE AND STRUCTURES		
Cat® C4.4 twin turbo diesel engine	✓		600 mm (24") double grouser track shoes		✓
Three selectable power modes	✓		600 mm (24") triple grouser track shoes	✓	
Automatic engine speed control	✓		Tie-down points (ISO 15818 compliant)	✓	
Automatic engine idle shutdown	✓		Segmented track guiding guards	✓	
4500 m (14,760 ft) altitude capability with derate from 3000 m (9,840 ft)	✓		Full-length track guiding guards		✓
52° C (125° F) high-ambient cooling capacity	✓		Bottom guards	✓	
Starting capability for -18° C (0° F) with jump start receptacle		✓	HD bottom guards		✓
Starting capability for -32° C (-25° F)		✓	Swivel guard		✓
Double element air filter with integrated precleaner	✓		Travel motor guards	✓	
Electric cooling fans with auto-reverse function	✓		HD travel motor guards		✓
HYDRAULIC SYSTEM			Grease lubricated track links	✓	
Boom and stick regeneration circuits	✓		3700 kg (8,200 lb) counterweight		✓
Electronic main control valve	✓		4200 kg (9,300 lb) counterweight		✓
Automatic warm up	✓		4700 kg (10,400 lb) counterweight for Super Long Reach		✓
Auto Dig Boost ⁽¹⁾	✓		BOOM, STICKS AND LINKAGES		
Two-speed travel	✓		5.7 m (18'8") HD Reach boom	✓	
Boom and stick drift reduction valve	✓		8.85 m (29'0") Super Long Reach boom		✓
Element type main hydraulic filter	✓		2.5 m (8'2") HD Reach stick		✓
Slider joysticks	✓		2.9 m (9'6") HD Reach stick		✓
Tandem type electronic main pump	✓		6.28 m (20'7") Super Long Reach stick		✓
Hammer return filter circuit		✓	Bucket linkage, B1-family without lifting eye, Cat Grade		✓
Basic Tool Control (one pump, one way high-pressure flow)		✓	Bucket linkage, A-family without lifting eye, SLR		✓
Tool Control (two pumps, one/two way high-pressure flow)		✓			
Quick coupler circuit for Cat Pin Grabber		✓			

(continued on next page)

⁽¹⁾Not available for Super Long Reach.

Standard and Optional Equipment (continued)

Standard and optional equipment may vary. Consult your Cat dealer for details.

	Standard	Optional		Standard	Optional
ELECTRICAL SYSTEM			SERVICE AND MAINTENANCE		
Maintenance-free 1,000 CCA batteries	✓		Sampling ports for Scheduled Oil Sampling (S·O·S SM)	✓	
Centralized electrical disconnect switch	✓		Grouped location for engine oil and fuel filters	✓	
Programmable time-delay LED working lights	✓		Ground-level second dipstick for engine oil	✓	
LED chassis, boom and cab lights	✓		Radiator screen		✓
Premium surround lighting package		✓	SAFETY AND SECURITY		
CAT TECHNOLOGY			Cat Detect – People Detection		✓
Cat Product Link™	✓		Rearview camera and right-side mirror	✓	
Remote Flash	✓		Right-hand-sideview camera		✓
Remote Troubleshoot	✓		360° visibility		✓
Cat Grade Connectivity		✓	Neutral lever (lock out) for all controls	✓	
Compatibility with radios and base stations from Trimble, Topcon, and Leica	✓		Anti-skid plate and countersunk bolts on service platform	✓	
Capability to install 3D grade systems from Trimble, Topcon, and Leica	✓		Ground-level accessible secondary engine shutoff switch in cab	✓	
Cat Grade with 2D and offset memory**	✓		RH handrail and hand hold (ISO 2867:2011 compliant)	✓	
Cat Grade with Advanced 2D		✓	Travel alarm		✓
Cat Grade with 3D single GNSS		✓	Swing alarm		✓
Cat Grade with 3D dual GNSS		✓	Inspection lighting		✓
Cat Assist:*	✓				
– Grade Assist					
– Boom Assist					
– Bucket Assist					
– Swing Assist					
Cat Payload:*	✓				
– Static weigh					
– Semiautomatic calibration					
– Payload/cycle information					
– USB reporting capability					
2D E-Fence:**	✓				
– E-ceiling					
– E-floor					
– E-swing					
– E-wall					
– E-cab avoidance					
Auto hammer stop	✓				
Laser catcher		✓			
Work tool recognition	✓				
Work tool tracking**	✓				

*Optional on machines equipped with a Super Long Reach boom.

**Requires PL161 attachment locator on work tool and Bluetooth® receiver on machine.

320 Attachments

Dealer Installed Kit and Attachments

Attachments may vary. Consult your Cat dealer for details.

CAB

- Radial lower wiper for 70/30 with washer
- RH electrical pedal for tool control
- Rain protector plus cab light cover
- Polycarbonate roof hatch kit (comfort cab)

SAFETY AND SECURITY

- Bluetooth key fob

SERVICE AND MAINTENANCE

- Grease gun holder

GUARDS

- Side rubber bumper
- Falling object guard (not compatible with cab light cover, rain protector)
- Mesh guard full front (not compatible with cab light cover, rain protector)
- Mesh guard lower half front

Cab Options

	Comfort	Deluxe
Rollover Protective Structure (ROPS)	●	●
High-resolution 203 mm (8") LCD touchscreen monitor	●	●
High-resolution 254 mm (10") LCD touchscreen monitor	○	○
Auto bi-level air conditioner	●	●
Jog dial and shortcut keys for monitor control	●	●
Keyless push-to-start engine control	●	●
Height-adjustable console, three steps with tool	●	X
Height-adjustable console, infinite with no tool	X	●
Mechanical-suspension seat	●	X
Heated air-suspension seat	X	●
51 mm (2") seat belt	●	●
Fixed left-side console	●	X
Tilt-up left-side console	X	●
Bluetooth integrated radio	●	X
Bluetooth integrated radio with USB/Aux ports	X	●
12V DC outlets	●	●
Document storage	●	●
Overhead storage and rear storage with nets	X	●
Cup and bottle holders	●	●
Openable two-piece front window	●	●
Upper radial wiper with washer	●	●
Openable steel hatch	●	X
Openable polycarbonate skylight hatch	X	●
LED dome light	●	●
Floor welcome light	●	●
Roller front sunscreen	●	●
Roller rear sunscreen	○	○
Washable floor mat	●	●
Beacon ready	●	●
Cat Stick Steer	○	○
Auxiliary relay	X	○

● Standard

○ Optional

X Not available

320 Environmental Declaration

The following information applies to the machine at the time of final manufacture as configured for sale in the regions covered in this document. The content of this declaration is valid as of the date issued; however, content related to machine features and specifications are subject to change without notice. For additional information, please see the machine's Operation and Maintenance Manual.

For more information on sustainability in action and our progress, please visit <https://www.caterpillar.com/en/company/sustainability>.

Engine

- The 320 meets the China Nonroad Stage IV emission standards.
- Cat diesel engines are required to use ULSD (ultra-low sulfur diesel fuel with 15 ppm of sulfur or less) or ULSD blended with the following lower-carbon intensity fuels up to:
 - ✓ 20% biodiesel FAME (fatty acid methyl ester)*
 - ✓ 100% renewable diesel, HVO (hydrogenated vegetable oil) and GTL (gas-to-liquid) fuelsRefer to guidelines for successful application. Please consult your Cat dealer or "Caterpillar Machine Fluids Recommendations" (SEBU6250) for details.
**Engines with no aftertreatment devices can use higher blends, up to 100% biodiesel.*

Air Conditioning System

- The air conditioning system on this machine contains the fluorinated greenhouse gas refrigerant R134a (Global Warming Potential = 1430). The system contains 0.85 kg (1.9 lb) of refrigerant which has a CO₂ equivalent of 1.216 metric tonnes (1.340 tons).

Paint

- Based on best available knowledge, the maximum allowable concentration, measured in parts per million (PPM), of the following heavy metals in paint are:
 - Barium < 0.01%
 - Cadmium < 0.01%
 - Chromium < 0.01%
 - Lead < 0.01%

Sound Performance

ISO 6395 (external) – 99 dB(A)

ISO 6396 (inside cab) – 70 dB(A)

- When properly installed and maintained, the cab offered by Caterpillar, when tested with doors and windows closed according to ANSI/SAE J1166 OCT98, meets OSHA and MSHA requirements for operator sound exposure limits in effect at time of manufacture.
- Hearing protection may be needed when operating with an open operator station and cab (when not properly maintained or doors/windows open) for extended periods or in a noisy environment.

Oils and Fluids

- Caterpillar factory fills with ethylene glycol coolants. Cat Diesel Engine Antifreeze/Coolant (DEAC) and Cat Extended Life Coolant (ELC) can be recycled. Consult your Cat dealer for more information.
- Cat Bio HYDO™ Advanced is an EU Ecolabel approved biodegradable hydraulic oil.
- Additional fluids are likely to be present, please consult the Operations and Maintenance Manual or the Application and Installation guide for complete fluid recommendations and maintenance intervals.

Features and Technology

- The following features and technology may contribute to fuel savings and/or carbon reduction. Features may vary. Consult your Cat dealer for details.
 - Advanced hydraulic systems balance power and efficiency
 - Smart mode matches machine power to digging requirements automatically
 - Eco mode minimizes fuel consumption for light applications
 - Automatic engine idle shutdown system reduces idle hours
 - Increase operating efficiency up to 45% with standard Cat technologies
 - Cut maintenance costs up to 10% with extended service intervals
 - Remote Flash and Remote Troubleshoot

For more complete information on Cat products, dealer services, and industry solutions, visit us on the web at www.cat.com

© 2022 Caterpillar
All rights reserved

Materials and specifications are subject to change without notice. Featured machines in photos may include additional equipment. See your Cat dealer for available options.

CAT, CATERPILLAR, LET'S DO THE WORK, their respective logos, "Caterpillar Corporate Yellow," the "Power Edge" and Cat "Modern Hex" trade dress as well as corporate and product identity used herein, are trademarks of Caterpillar and may not be used without permission.

AEXQ3461-02 (09-2022)
Replaces AEXQ3461-01
Build Number: 07F
(China)

