

Welcome to Caterpillar's online store

**PARTS.CAT.COM**

Online shopping user guide

### Welcome to PARTS.CAT.COM

1.	If you need help, we will be happy to help you!.....	3
2.	Get to know the PARTS.CAT.COM interface better.....	4
2.1	How to login.....	4
2.2	Brief description of basic sections.....	5
3.	QUICK ORDER / SHOPPING CART (when you know part numbers).....	7
3.1	CAT Fluids, Additives, and greases.....	8
4.	SIS – Service Information System (SEARCHING FOR PARTS by Serial Number). ....	9
4.1	How to find the parts and add them to cart. ....	10
4.2	SIS shopping cart, My Lists and cart transferring to online store. ....	13
5.	Placing an Order.....	14
5.1	Shopping cart summary.....	14
5.2	Pickup & Delivery. ....	15
5.3	Summary & Payment and usage of Promo code.....	17
6.	Control Center.....	18
6.1	“Personal Information” .....	19
6.2	“Shopping Preferences” .....	19
6.3	My Equipment .....	20
6.3.1	Parts & Resources information related to chosen Equipment.....	21
6.4	Address Book.....	22
6.5	Order History.....	23
6.6	Saved Lists. ....	24
6.6.1	How to create your own Part lists.....	25

## 1. If you need help, we will be happy to help you!

If you experience problems, please contact the main support persons for technical assistance.

Country	Name and Last name	Job description	Phone number	E-mail address
Latvia	Artūrs Urtāns	Countersales Specialist	+371 293 355 25	<a href="mailto:parts.lv@avesco-cat.com">parts.lv@avesco-cat.com</a>
Estonia	Jorma Mälga	Countersales Specialist	+372 532 686 84	<a href="mailto:jorma.malga@avesco-cat.com">jorma.malga@avesco-cat.com</a>
Lithuania	Donatas Šukevicius	Spare parts Sales-manager	+370 655 191 83	<a href="mailto:donatas.sukevicius@avesco-cat.com">donatas.sukevicius@avesco-cat.com</a>

In addition, in case of regular questions feel free to contact the after-sales team to be advised.

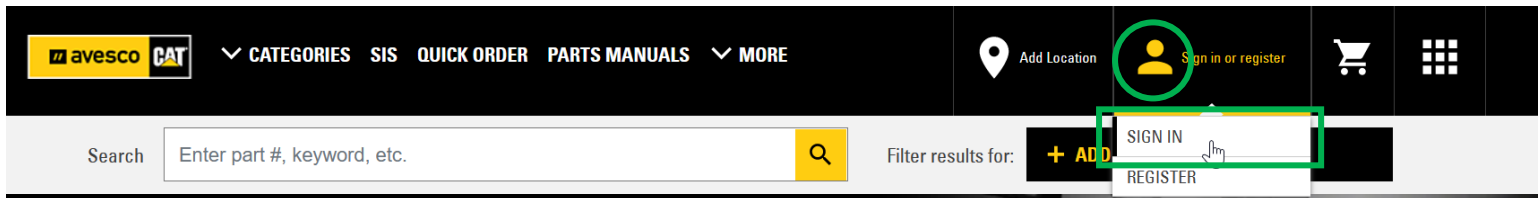
Country	Name and Last name	Job description	Phone number	E-mail address
Latvia	Artūrs Urtāns	Countersales Specialist	+371 293 355 25	<a href="mailto:parts.lv@avesco-cat.com">parts.lv@avesco-cat.com</a>
Latvia	Andris Līrmanis	Countersales Specialist	+371 293 355 25	<a href="mailto:parts.lv@avesco-cat.com">parts.lv@avesco-cat.com</a>
Latvia	Imants Vidiņš	Product Support Sales Representative	+371 256 396 14	<a href="mailto:imants.vidins@avesco-cat.com">imants.vidins@avesco-cat.com</a>
Latvia	Juris Sproģis	Product Support Sales Representative	+371 265 228 00	<a href="mailto:juris.sprogis@avesco-cat.com">juris.sprogis@avesco-cat.com</a>
Estonia	Jorma Mälga	Countersales Specialist	+372 532 686 84	<a href="mailto:jorma.malga@avesco-cat.com">jorma.malga@avesco-cat.com</a>
Estonia	Tõnu Liinat	Countersales Specialist	+372 575 033 44	<a href="mailto:tonu.liinat@avesco-cat.com">tonu.liinat@avesco-cat.com</a>
Estonia	Argo Villers	Product Support Sales Representative	+372 530 321 22	<a href="mailto:argo.villers@avesco-cat.com">argo.villers@avesco-cat.com</a>
Estonia	Martin Kutsar	Product Support Sales Representative	+372 585 404 18	<a href="mailto:martin.kutsar@avesco-cat.com">martin.kutsar@avesco-cat.com</a>
Lithuania	Donatas Šukevicius	Spare parts Sales-manager	+370 655 191 83	<a href="mailto:donatas.sukevicius@avesco-cat.com">donatas.sukevicius@avesco-cat.com</a>
Lithuania	Justas Ronkaitis	Countersales Specialist	+370 698 523 56	<a href="mailto:justas.ronkaitis@avesco-cat.com">justas.ronkaitis@avesco-cat.com</a>
Lithuania	Mantas Balevičius	Product Support Sales Representative	+370 665 074 30	<a href="mailto:mantas.balevicius@avesco-cat.com">mantas.balevicius@avesco-cat.com</a>
Lithuania	Donatas Vaičiūnas	Product Support Sales Representative	+370 614 836 29	<a href="mailto:donatas.vaiciunas@avesco-cat.com">donatas.vaiciunas@avesco-cat.com</a>



### 2. Get to know the PARTS.CAT.COM interface better.

#### 2.1 How to login.

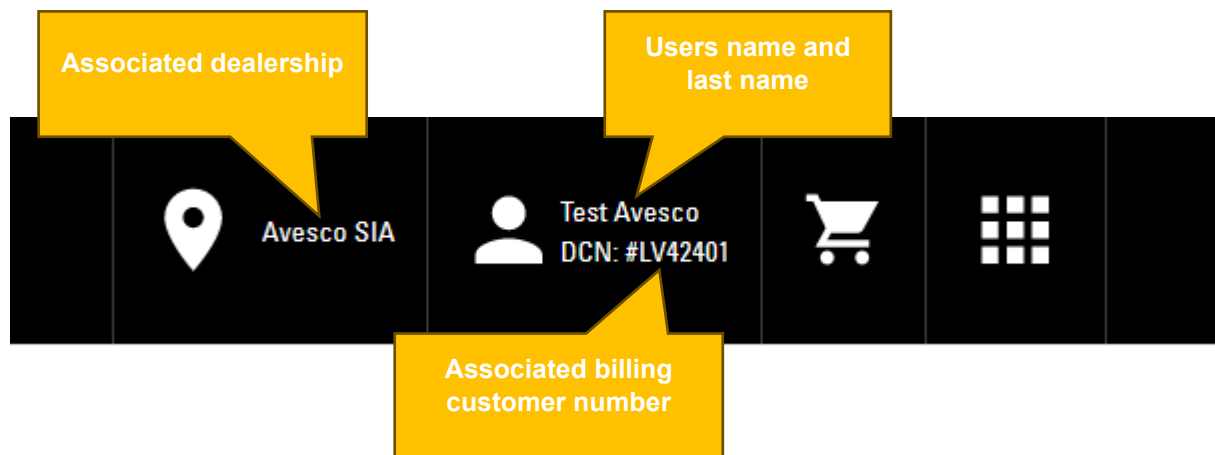
You can log in to the online store at [PARTS.CAT.COM](https://www.avesco-cat.com). There is a person icon in the top bar, pressing on it select "SIGN IN".



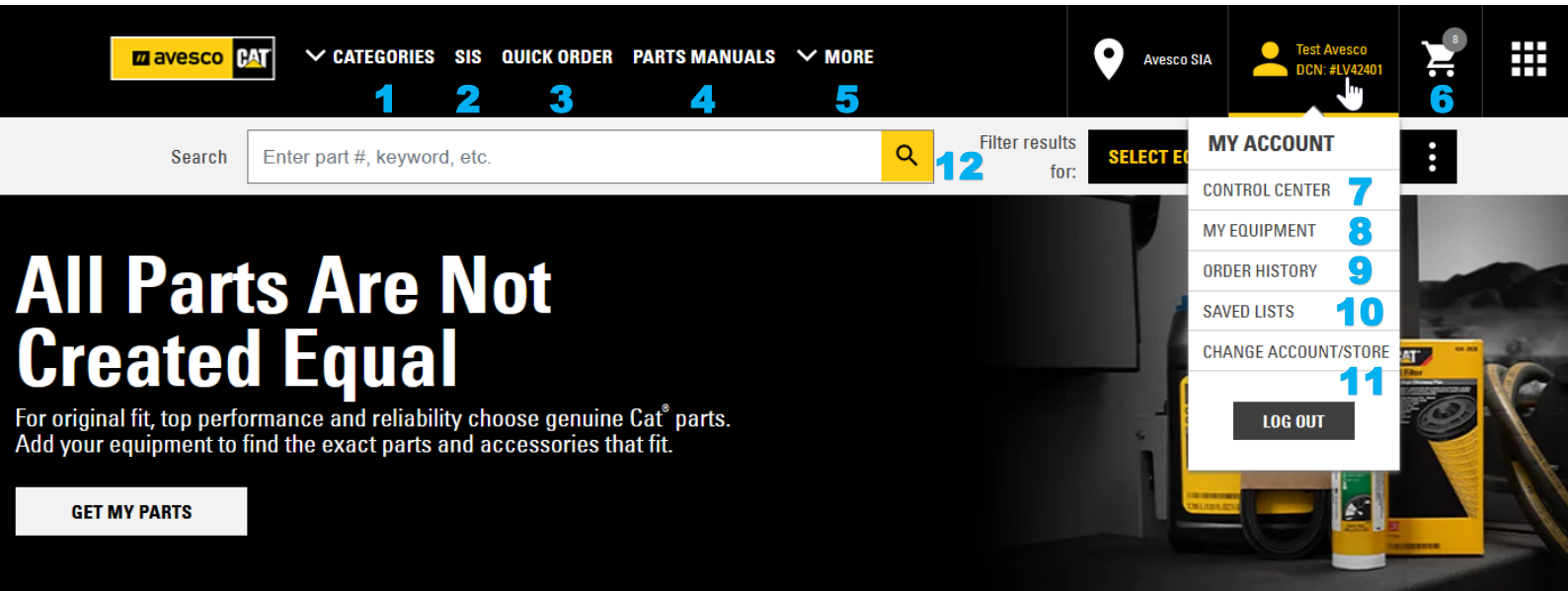
After pressing on "SIGN IN" you will be prompted to enter the username and password. Please enter username and press "Continue" and password window will appear, please enter your account password and press "SIGN IN" to proceed to online store.

A screenshot of the 'Sign In' form. The title is 'Sign In to buy parts'. There is a text input field for 'Username' with the value 'avescotest' and a user icon. Below the field is a blue link 'Forgot username?'. At the bottom is a yellow 'Continue' button.A screenshot of the 'Sign In' form. The title is 'Sign In avescotest to buy parts'. There is a text input field for 'Password' with a masked password '.....' and a user icon. Below the field is a blue link 'Forgot Password?'. At the bottom is a yellow 'Sign In' button.

After successful login you should see the following information.



### 2.2 Brief description of basic sections.



There will be a brief overview of each section here. Most useful sections highlighted in **Bold** and described in more detail in subsequent sections of the guidebook.

1. Categories – you can search for parts by categories
2. **SIS – you can search for parts and drawings and useful service information using Service Information System (SIS) (Chapter #4)**
3. **QUICK ORDER – easiest way for parts ordering if part numbers are known, the shopping cart will open (Chapter #3)**
4. PARTS MENU – here you can check for parts by description or number and find part drawings
5. MORE – under here are located frequently asked questions, information about updates & articles and video tutorial sections.
6. CART icon – this is your shopping cart, number in circle represents how many part items are currently in cart, to open the cart press on it.
7. **CONTROL CENTER – here you will be able to find personal information, shopping preferences, equipment list, address book, browsing and order history and saved lists subcategories (Chapter #6)**
8. MY EQUIPMENT – quick access button to subcategory equipment list
9. ORDER HISTORY – quick access button to subcategory order history.
10. SAVED LISTS – quick access button to subcategory saved lists.
11. CHANGE ACCOUNT/STORE – here you can switch the customers (billing customer numbers), to create an online purchase for different customer, if settings for that are set correctly in system and your user account are associated with more than one billing customer number. If it's not set for you, this menu will not even be displayed.

Test Avesco  
DCN: #LV30235

Press on dropdown list and choose the needed customer you want to switch and confirm with pressing "CONTINUE"

Chosen billing customer number will be changed and reflected next to profile icon

#### ASSOCIATED DEALERS

Changing Your Dealer Or Branch Could Result In Pricing Changes.  
 Promotions are offered by individual dealers, and do not apply at other dealerships.

DEALER\*  
AVESCO BALTICS  
[ADD A DEALER](#)

CUSTOMER NUMBER\*

LV30235-POWER Rental

Select Dealer Account

LV30235-POWER Rental

LV42401-AVESCO PCC TEST

CONTINUE

12. Search bar, for quick part check especially if you know the part number. Type the part number and press on magnification icon, window with search result of part will pop up (scroll down to see more information about part).

**avesco CAT** | **CATEGORIES** | **SIS** | **QUICK ORDER** | **PARTS MANUALS** | **MORE** | Avesco SIA | Test Avesco DCN: #LV42401

Search: Enter part #, keyword, etc. | Filtering results for: **D6N DJY01127**

< Back | Home / Engine / Engine Filters & Fluids / Engine Filters / Engine Oil Filters & Components / 462-1171: Standard Efficiency Engine Oil Filter

### 462-1171: STANDARD EFFICIENCY ENGINE OIL FILTER

Standard Efficiency Engine Oil Filter

Brand: Cat

**€24.04 (EUR)** (Customer price with discounts (without VAT))

€25.31 (EUR) (Regular price (without VAT))

System is notifying that this part will fit to chosen equipment

✓ **Factory Fit** | D6N TRACK-TYPE TRACTOR DJY01127

Enter desired quantity

QUANTITY: - 1 +

**ADD TO CART** | **SAVE TO LIST**

AVAILABLE FOR PICKUP | 1 In Stock

Delivery options available in checkout

WARRANTY INFORMATION | RETURN POLICY

Shows the availability of spare part in the dealer's warehouse

You can add item to shopping cart

You can add item to saved List

Recommendations for related products

#### FREQUENTLY BOUGHT TOGETHER

THIS ITEM			
462-1171: Standard Efficiency Engine Oil Filter	360-8960: Fuel Filter	479-4131: Sep Element	525-6206: Standard Efficiency Fuel Filter
€24.04 (EUR)	€33.48 (EUR)	€50.88 (EUR)	€43.25 (EUR)
✓ Factory Fit	✓ Factory Fit	✓ Factory Fit	✓ Factory Fit

### 3. QUICK ORDER / SHOPPING CART (when you know part numbers).

When you know the part number you want, the easiest way for ordering is to use “QUICK ORDER” function found in upper tab, or press on shopping cart icon, the same window will be opened.

## SHOPPING CART

Enter the part number (you can enter without a dash)

If you want to order the fluids or greases, you should enter **exact part number** specified in table on next page.

Quantity\* Item Number\* Asset ID/Serial Number Line Item Note Customer Part Number Customer Item Number

Enter desired quantity

You can add reference notes if needed, those will be reflected on invoice as well.

ADD TO CART AND CHECKOUT

If you have part list created in Excel format, you can import the file directly in shopping cart. But columns in file should match the layout of Quick Order, check "xls sample"

Drag & Drop to Upload File or

CHOOSE A FILE | IMPORT SAVED LIST

(.csv sample, .xls sample, .xlsx sample)

You can import part list from saved lists if you have some created.

Choose the list wanted and press on "IMPORT"

ORDER INFORMATION

Account: LV42401-AVESCO PCC TEST

Dealer Store: Avesco SIA

Billing customer information reflected.

EQUIPMENT (Optional)

Choose or Enter Equipment

You may type in your equipment serial number if you don't find it in the list.

IMPORT SAVED LIST

Name	Items	Created By	Modified	
PM4 2000h	7	Test Avesco	1/16/24	IMPORT
PM3	4	Test Avesco	1/16/24	IMPORT
PM2	3	Test Avesco	1/16/24	IMPORT

ITEMS IN CART 0 items

Your cart is currently empty.

After adding parts in the fields “ADD TO CART” and “ADD TO CART AND CHECKOUT” buttons become active.

ADD TO CART – will add items to shopping cart and you can continue working in online store.  
 ADD TO CART AND CHECKOUT – will add items to cart and will direct you to the order window (You will find more details about order process in [Chapter #5](#))

## QUICK ORDER

Quantity*	Item Number*	Asset ID/Serial Number	Line Item Note	Customer Part Number	Customer Item Number
1	1R-1807				
1	5153980k				
1	1R-0762				

Copy & Paste

CLEAR ALL

ADD TO CART

ADD TO CART AND CHECKOUT

### 3.1 CAT Fluids, Additives, and greases.

Please be informed that you can order CAT Oils, Additives and Greases through PARTS.CAT.COM and get this additional eCommerce discount. To do that please add needed products specified quantity and item numbers (based on table given below) manually to shopping cart like described in previous page.

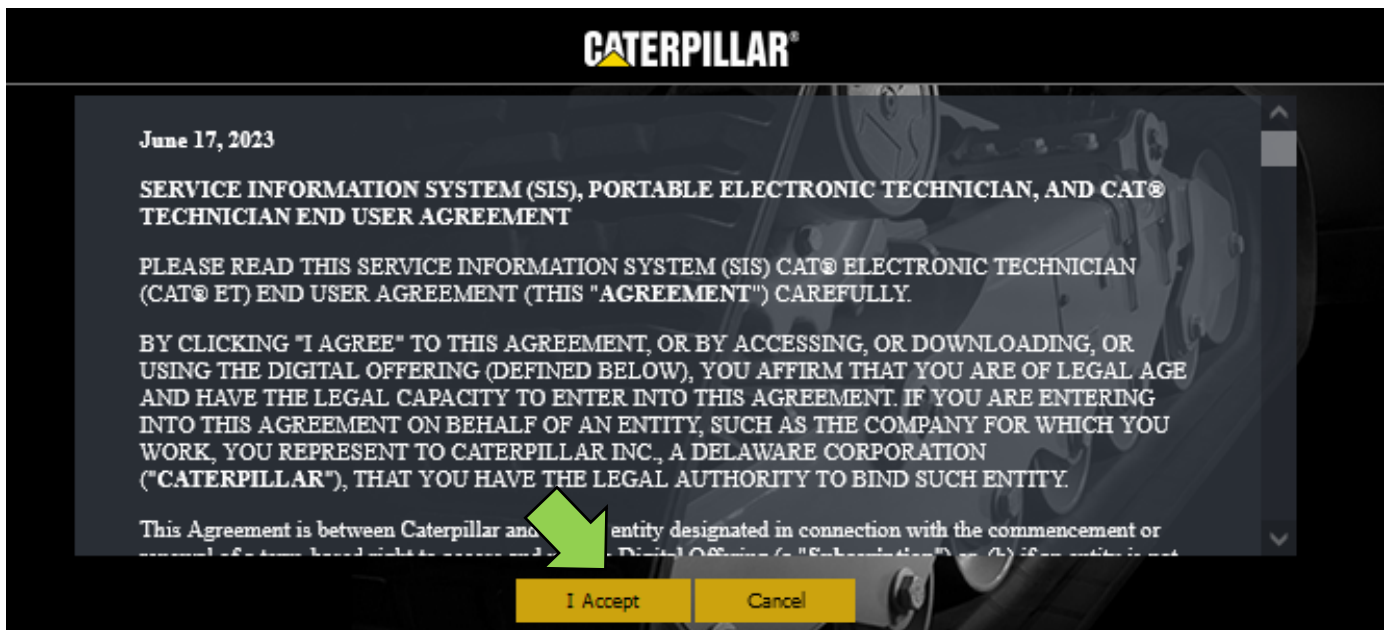
CAT OILS			
Type of Oil	Product description	Product volume	Item Number
Diesel Engine Oil Ultra Low Sulfur (API CK-4)	Cat® DEO-ULS SAE 10W-30	4L	5153978K
		20L	5153980K
		208L	5153981D
	Cat® DEO-ULS SAE 15W-40	20L	5153968K
		208L	5153970D
Hydraulic Oil	Cat® HYDO Advanced 10	5L	3096945K
		20L	3096942K
		208L	3096938D
Transmission Oil	Cat® TDTO SAE 10W	20L	7X7852K
		208L	1032528D
	Cat® TDTO SAE 30	5L	9X6467K
		20L	7X7855K
		208L	9X6466D
	Cat® TDTO SAE 50	20L	7X7858K
		Cat® SATO	20L
Axle & Final Drive Oil	Cat® FDAO 60	20L	1848055K
	Cat® MTO	20L	1094395K
Gear Oil and Specialty Oil	Cat® GO 80W-90	20L	7X7867K
	Compactor Oil	20L	4565476K
Additives and greases			
Axle and Brake Oil Additives	Cat® Axle and Brake Additive	1L	637-9983
Multi-purpose Greases	Cat® Utility Grease (Cartridge)	390g	4526011C
	Cat® Prime Application Grease (Cartridge)	390g	4526006C



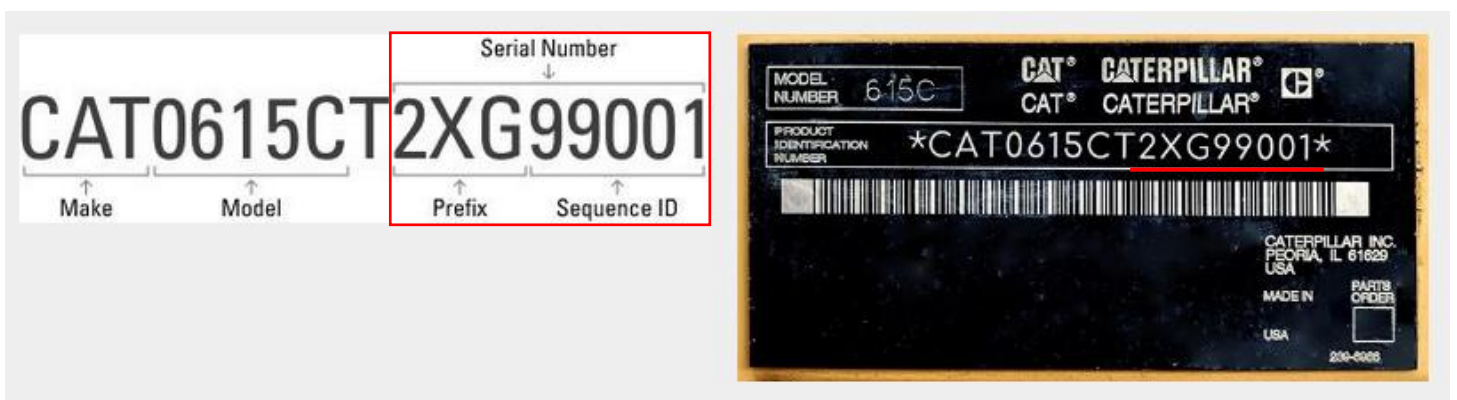
### 4. SIS – Service Information System (SEARCHING FOR PARTS by Serial Number).

We are highly recommending using SIS over “CATEGORIES” and “PARTS MANUALS” for part searching! Information available in SIS is more precise, detailed and reflected in a more structured way. You will be able to zoom in and zoom out drawings and even use 3D drawings as well (when they are available). To get in Service Information System press on appropriate “SIS” menu in upper tab and you will be redirected to SIS2.0 webpage.

Upon first use, you must agree to all terms of use prompt windows pressing on “I Accept” button.



Before we start it's mandatory to clarify the equipment's serial number you want to search parts for. Here is a brief explanation how to read it correctly from the ID plate.



Starting in 2001, Cat machine models began using a 17-character Product Identification Number (PIN) on the machine plate. **The serial number is the last 8 characters** (prefix/sequence ID) of the PIN. More information you can find by clicking on this link: <https://www.avesco-cat.com/choose-the-right-spare-parts>.

After confirming the terms and conditions requested for SIS2.0 the webpage will open.

**Serial number field.**

**Here you can search by keyword or part number (for example part number of bucket to see the parts for bucket)**

**This is your shopping cart.**

**Under profile icon you might find Settings, Resources, New Information, Announcements.**

**Need access to Caterpillar service and parts manuals – anytime, anywhere? Get the NEW SIS2GO**  
Learn More @ [cat.com/sis2go](http://cat.com/sis2go)

**Press on the CAT logo to return to homepage.**

**To get back from SIS to online store, press on 6 dot icon and choose "Cat@ Parts Store".**

**Cat@ Parts Store**  
NPR Search ▾  
Service Software Files [↗](#)  
External Links ▾

### 4.1 How to find the parts and add them to cart.

Firstly, enter the serial number which consists of 8 characters in the appropriate window (you can search as well by prefix only, but in this case the system produces more extensive search results found) and press on "Navigate" icon. Referring to full 8-character serial number for searching the search results will be produced based on Product Configuration data from manufactory.

**Serial number field.**

**Here you can search by keyword or part number (for example part number of bucket to see the parts for bucket)**

**This is your shopping cart.**

**Under profile icon you might find Settings, Resources, New Information, Announcements.**

**Need access to Caterpillar service and parts manuals – anytime, anywhere? Get the NEW SIS2GO**  
Learn More @ [cat.com/sis2go](http://cat.com/sis2go)

**Press on the CAT logo to return to homepage.**

**To get back from SIS to online store, press on 6 dot icon and choose "Cat@ Parts Store".**

**Cat@ Parts Store**  
NPR Search ▾  
Service Software Files [↗](#)  
External Links ▾

**Under "Service" tab you will find "Operation and Maintenance Manual" section with different useful information**

**Choose the "Parts" tab to search for parts by Categories.**

**At the beginning we are strongly suggesting using the "System and Components" pane on the left. And search for needed parts referring on Component groups!**

**Pay attention to the green message which is informing that this group of parts including all subsections was installed on machine by Manufacturer.**

**If you have chosen the serial number in Parts.Cat.Com already, it will appear automatically in SIS2.0 (how to manage Equipment lists follow [Chapter #6.3](#))**

**Filtering results for: D6N DJY01127**

**You can always click on the blue "Part Number" to go deeper into the section and see subsections with expanded parts list, drawings if they are available or open some additional explanation window.**

**Track-Type Tractor > Track-Type Tractor > D6N > DJY**

**Dashboard** **Parts** **Service**

**Remote Service & Support**

**New Information**

**Alternate Parts**

**Product Configuration**

**Systems And Components**

- Air Inlet And Exhaust System
- Electrical And Starting System
- Engine And Related Systems
- Frame And Body
- Hydraulic System
- Implements
- Lubrication System
- Machine Arrangement
- Operator Station
- Power Train
- Service Equipment And Supplies
- Steering And Braking System
- Undercarriage
- Work Tools
- Kit - Repairs/service
- Kit - Upgrades

**D6N Track-Type Tractor**  
Machine Serial Number - DJY01127  
Machine Build Date - 2008/02/21

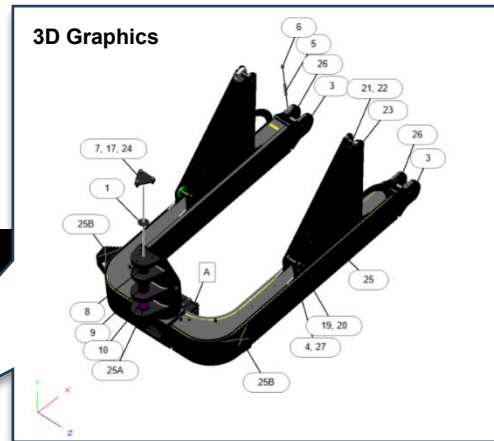
**C6.6 Engine - Machine**  
Engine Serial Number - C6E08823  
Engine Build Date -

**Product - Entire Group (DJY01127)**

Part Number	Serial Number	Part Name
289-1174		Merchandise AR
230-2140		Hydraulic AR-4 Valve
132-3391		Plate GP-Certification
157-3450		Battery GP
301-7806		Lighting GP-Warning Beacon
287-6106		Track GP
301-7805		Lighting GP-Flood
235-5001		Blade GP-Angling
251-8620		Guard GP-Track Roller
246-8488		General AR
272-6985		Suppression AR-Sound
273-2009		Grade Control AR-Laser

**Found in Product Configuration**  
225-6292

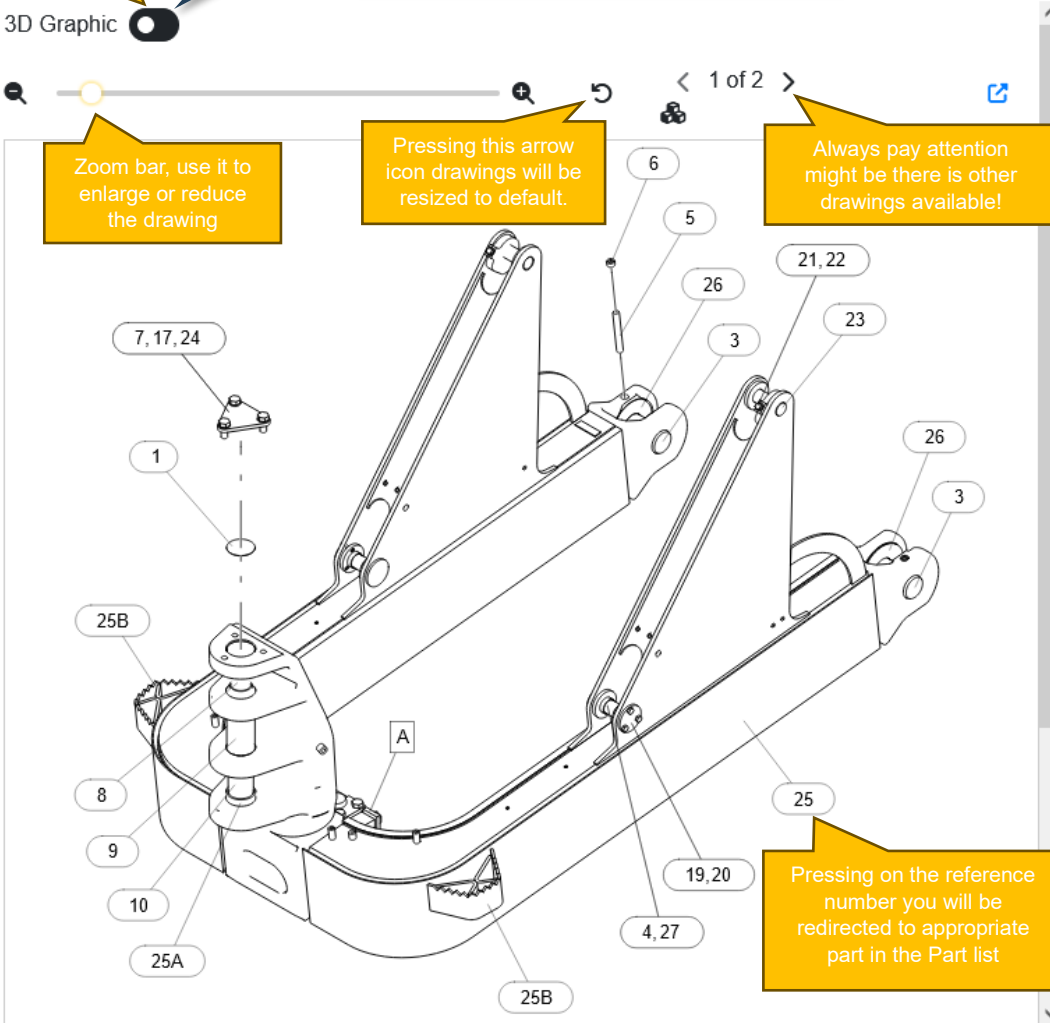
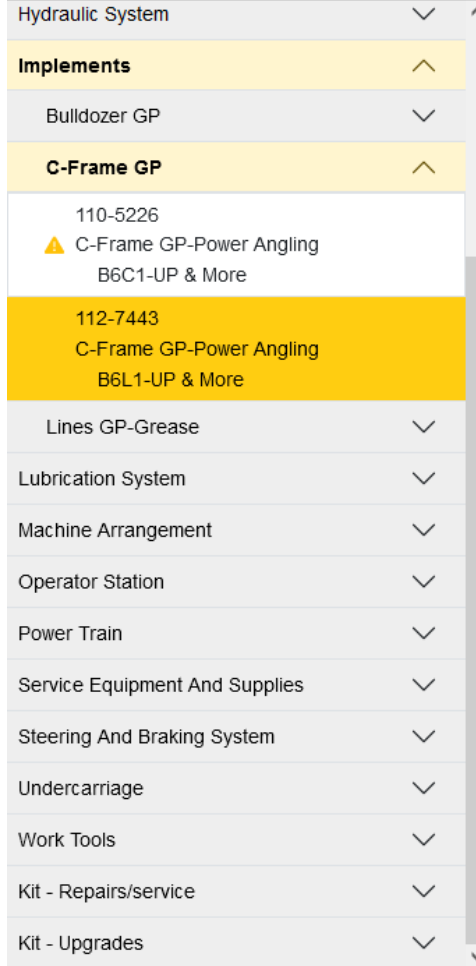
When you find the desired component group you can search for parts based on given drawings, switch on and off 3D Graphics when available, find Service Articles, see on which equipment's such a component might be used as well and add parts to cart for ordering.



You can switch 3D Graphics on and off.



Track-Type Tractor > Track-Type Tractor > D6N > DJY



Zoom bar, use it to enlarge or reduce the drawing

Pressing this arrow icon drawings will be resized to default.

Always pay attention might be there is other drawings available!

Pressing on the reference number you will be redirected to appropriate part in the Part list

### How to operate with 2D drawings

- For enlarging and reducing use the zoom bar.
- To move the picture press and hold left cursor of the mouse and move picture in desired direction.
- To return to default size press on arrow icon next to zoom bar.

### How to operate with 3D drawings

- For enlarging and reducing use the mouse scroll wheel.
- To move the picture up, down, left and right press and hold "Ctrl" + right mouse button and move graphic in desired direction.
- To rotate the graphic around in 3D, use the right mouse button

Press on "Cart" icon to open it

It shows total amount of pieces added into the cart.

You can print out the drawings and part lists

### Entire Group

SMCS Code

6063 - C-Frame

112-7443 C-FRAME GP-POWER ANGLING  
 S/N F6A1-UP; F6C1-UP; G6G1-UP; B6L1-UP; G6M1-UP; B6Y1-UP  
 PART OF [225-8291](#) BULLDOZER AR-ANGLING, [223-6304](#), [225-8292](#), [267-2837](#), [274-6627](#),  
[274-9834](#) BULLDOZER AR-PWR ANGLE & TILT  
 AN ATTACHMENT

Individual Parts Service Articles Where Used

To Add all parts from the list to shopping cart

Price And Availability

H.I.S.

+ All

To see the prices and availability press here




Total amount of the parts used in this group

Set desired quantity for ordering

Switching on/off part graphics

Customer price per item with discounts (without VAT)

System shows how many pieces you have added to cart.

Part Number	Part Name	Quantity Req'd	In Store	Price	Availability	Cart	Info
1 124-5235 B 	Shim (0.8-MM Thk)	6	Grimber...	13.25 (EUR) Per Unit	Yes	3	
2 089-8249 	Spacer (64X72X13-MM Thk)	2	Yes	45.68 (EUR) Per Unit	Availability in dealer's warehouse for requested quantity	2	
3 109-0958 	Pin	2	Grimber...	305.98 (EUR) Per Unit	All other notifications mean that this part is not in dealer's warehouse.	2	

Availability in dealer's warehouse for requested quantity

All other notifications mean that this part is not in dealer's warehouse.

"Add to cart" button for adding parts to shopping cart.

Make sure you have added all desired parts to the cart then you can surf around in other "System and Component" categories to add more parts If needed, already added parts will stay into the shopping cart.

Once you have added all desired parts in shopping cart, we can proceed to your shopping cart pressing on cart icon in upper pane.

### 4.2 SIS shopping cart, My Lists and cart transferring to online store.

This is what the SIS cart looks like. Here you can add the notes, define name for list and save it if you want, print them out, export and import them and you can also check here price per unit, total price, availability in dealer's warehouse and transfer cart to PARTS.CAT.COM by pressing "ORDER PARTS" for ordering.

#### Cart Section

**Cart Section**

Order ID: Cart 01-17-2024 17:08

You can [add a note](#) to this order.

Quantity	SMCS	Serial Number	Part Number	Part Name	Group Number	Group Name	Price Per Unit	In Store	Total Price	Note
2	6063	DJY01127	<a href="#">089-8249</a>	Spacer	<a href="#">112-7443</a>	C-Frame GP-Power Angling	45.68 (EUR)	Yes	91.36 (EUR)	
3	6063	DJY01127	<a href="#">124-5235</a>	Shim	<a href="#">112-7443</a>	C-Frame GP-Power Angling	13.25 (EUR)	<a href="#">Grimber...</a>	39.75 (EUR)	
									<b>Subtotal</b> 131.11 (EUR)	

Buttons: Add Part, Delete All, ORDER PARTS, Price And Availability, SAVE MY LIST, Export, Import, Print.

Callouts:

- Saved lists you will find here
- You can enter name of list
- Press here to Save the list. Please be aware after that your cart will become empty and list will be saved in "My Lists" tab. (See picture below)
- Shows Availability
- Price per unit with discount
- To add the note for line press on "+" button
- Press here to see the prices and availability
- Press on "Order parts" button to transfer SIS cart to Parts.cat.com
- You can add to the list parts specifying the quantity, Part number and pressing "Enter". This function can be used to add CAT fluids for example. Please be aware prices and availability for fluids will be reflected in parts.cat.com then.

#### My Lists Section

**My Lists Section**

Order ID: Cart 01-17-2024 17:08

Your saved Lists

Callouts:

- Press on the list to review it. Additional window will open.
- To add all list straight away to cart
- Press here to Add Part to saved List, additional fields will appear, choose desired quantity and type in Part number and press "Enter" and confirm with "OK" button.

Modal Window: Cart 01-17-2024 17:08

Quantity	SMCS	Serial Number	Part Number	Part Name	Group Number	Group Name
2	6063	DJY01127	<a href="#">089-8249</a>	Spacer	<a href="#">112-7443</a>	C-Frame GP-Power Angling
3	6063	DJY01127	<a href="#">124-5235</a>	Shim	<a href="#">112-7443</a>	C-Frame GP-Power Angling
1			<input type="text" value="5153980K"/>			

Buttons: Add Part, All, OK




### 5. Placing an Order.

#### 5.1 Shopping cart summary.


Placing an order begins with the PARTS.CAT.COM shopping cart (created through “Quick Order” function or transferred from SIS2.0).

**ITEMS IN CART** 6 items

Show Images

Quantity	Product Description	Availability	Total Price (EUR)
1) <input type="text" value="2"/>	 <p><b>089-8249: 13mm Thick Steel Spacer</b> 0.1 kg ⚠️ <b>PRODUCT WARNING(S)</b> <a href="#">SAVE TO LIST</a></p>	2: In Stock	<p><b>€91.36</b> <del>€48.08 ea.</del> €45.68 ea.</p>
<div style="display: flex; justify-content: space-between;"> <input type="text" value="DJY01127/DJY01127"/> <input type="text" value="Line item note"/> <input type="text" value="Customer part number"/> <input type="text" value="Customer item number"/> </div>			
2) <input type="text" value="3"/>	 <p><b>124-5235: 0.8mm Thick Steel Shim</b> ⚠️ Non-returnable part ⚠️ <b>PRODUCT WARNING(S)</b> <a href="#">SAVE TO LIST</a></p>	3: Grimbergen from 2 to 8 Day S.	<p><b>€39.75</b> <del>€13.95 ea.</del> €13.25 ea.</p>
<div style="display: flex; justify-content: space-between;"> <input type="text" value="DJY01127/DJY01127"/> <input type="text" value="Line item note"/> <input type="text" value="Customer part number"/> <input type="text" value="Customer item number"/> </div>			
3) <input type="text" value="1"/>	 <p><b>5153980K: DEO ULS 10W30 20L</b> 38.4 kg ⚠️ Non-returnable part <a href="#">SAVE TO LIST</a></p>	1: In Stock	<p><b>€103.55</b> <del>€109.00 ea.</del> €103.55 ea.</p>
<div style="display: flex; justify-content: space-between;"> <input type="text" value="Asset ID/serial number"/> <input type="text" value="Line item note"/> <input type="text" value="Customer part number"/> <input type="text" value="Customer item number"/> </div>			

**REQUEST BY DATE\***



Please enter M/d/yy

**ORDER SUMMARY**

---

**TOTAL ITEMS:** 6

**ORDER SUBTOTAL:** €234.66 EUR

**PROCEED TO CHECKOUT**

**EMPTY CART** [You can empty Cart by clicking here.](#)

**ORDER SUBTOTAL: €234.66 EUR**

**PROCEED TO CHECKOUT**

To continue placing an order please press on “PROCEED TO CHECKOUT” button and you will be redirected to “Pickup & Delivery” section.

In case you want to make any changes to order, you can return to the shopping cart by pressing on appropriate button menu in upper pane, make changes and continue again with “Proceed to Checkout” button.

[Shopping Cart](#)

Pickup & Delivery

Summary & Payment

### 5.2 Pickup & Delivery.

During these steps you will define the method of receiving the order - pickup or delivery and continue to the next step by pressing on "CONTINUE TO SUMMARY & PAYMENT" button.

**PICKUP option** – means that you will pick up the order by yourself at dealership.

**DELIVERY option** – means that you request the dealer to deliver your order to your desired place with courier services.

## PICKUP & DELIVERY

PICKUP DELIVERY CONTINUE TO SUMMARY & PAYMENT

### PICKUP LOCATION

Your order can be picked up at the following store location:

Store Name  
**AVESCO SIA**  
"Ziedu gravas"  
Mārupe LV-2167  
Latvia

[VIEW MAP](#)

You will be able to pick up the goods at dealership by specified address.

### CONTACT INFORMATION

In case we need to contact you regarding your orders.

**FIRST NAME\***  
Test

**LAST NAME\***  
Avesco

**EMAIL ADDRESS\***  
avescotest@avesco-cat.com

**PHONE NUMBER\***  
+371 22222222

**COMPANY NAME (Optional)**

### ADDITIONAL PICKUP INFORMATION

**REQUEST BY DATE\***  
1/18/24

**PICKUP METHOD\***  
Select an Option

**TOTAL WEIGHT** 38.6 kg [CALCULATE FREIGHT](#)

**PICKUP METHOD\***  
Select an Option  
Select an Option  
EXPRESS  
STANDARD

### ADDITIONAL ORDER DETAILS

**SPECIAL INSTRUCTIONS (Optional)**

Please be aware that "PICKUP METHOD" and "DELIVERY METHOD" found under the Delivery tab, applies only to all parts from your order which are not available in dealer's warehouse when your order is processed.

In those fields you will define the way how the missing parts will be delivered to dealership to fulfill your order.

- **STANDARD** – the missing parts will be delivered to dealership by truck within 7-10 business days.
- **EXPRESS** – the missing parts will be delivered to dealership by Air Freight in urgent matter within 1-3 business days.

**!!! Note extra air freight charge will be applied automatically during invoicing when "EXPRESS" method chosen according to the methodology table on next page !!!**

### EXPRESS Air Freight charge calculation methodology

Min Weight of total missed parts	Max Weight of total missed parts	Express charge
0.0001 Kg	1.0000 Kg	11 EUR
1.0001 Kg	9999.9999 Kg	11 EUR per each Kg

## PICKUP & DELIVERY

PICKUP

DELIVERY

CONTINUE TO SUMMARY & PAYMENT

---

### DELIVERY LOCATION

**DELIVERY ADDRESS\***

avescotest Shipping

Test Avesco  
"Ziedu Gravas"  
Marupe LV-2167  
Latvia

[EDIT](#)

You can switch delivery by choosing correct addresses from dropdown list if you have created them and saved ([Chapter #6.4](#)).

### CONTACT INFORMATION

**ORDERED BY**

Test Avesco [EDIT](#)

avescotest@avesco-cat.com

### ADDITIONAL ORDER DETAILS

**SPECIAL INSTRUCTIONS** (Optional)

**YES, SIGN ME UP!**  
I would like to be added to the email list to receive exclusive offers, maintenance tips, resources and more.

Yes, I'd like to receive future marketing (e.g. new product information, promotions)

### DELIVERY PRIORITY

**REQUEST BY DATE\***

1/18/24

Delivery Method*	Charge (EUR)
<input checked="" type="radio"/> EXPRESS	€0.00
<input type="radio"/> STANDARD	

Shipping: Charged at time of invoice

**TOTAL WEIGHT** ⓘ  
38.6 kg

Here you can edit delivery address

**DELIVERY ADDRESS\***

avescotest Shipping

avescotest Shipping

Branch 2

Marupe LV-2167  
Latvia

Dear customer please be informed that in case of your order delivery to desired location, the delivery fee might be added additionally to invoice (regardless of automatically added Express charge).

Please contact dealership by phones provided in [Chapter #1](#) to clarify the delivery costs!

You can use Automated Parcel Terminals as well, for that kind of reason we suggest you create and save desired addresses of Parcel Terminals into "ADDRESS BOOK" section in "Control Center" and leave a note in Special Instructions additionally that destination will be Automated Parcel Terminal and specify service provider. In case of issues dealership representatives will contact you.

When desired option of order receiving has been chosen, please proceed next by pressing on "Continue to Summary & Payment" and you will be redirected to the final step of placing an order.



### 5.3 Summary & Payment and usage of Promo code.

Here is the summary of your order, check it, edit if needed and place it by pressing "PLACE ORDER", your order will be transferred to a dealership for processing.

**In the case of specific eCommerce campaigns with the Promo Code you will have to enter this code to apply an additional campaign discount to your order!**

Shopping Cart

Pickup & Delivery

Summary & Payment

DOWNLOAD

PRINT

## SUMMARY & PAYMENT

### ORDER INFORMATION

ACCOUNT NUMBER  
LV42401 - AVESCO PCC TEST

DEALER STORE  
Avesco SIA

REQUEST BY DATE  
1/19/24

ORDERED BY  
Test Avesco  
avescotest@avesco-cat.com  
+371 22 222 222

EDIT

### PAYMENT INFORMATION

#### BILLING METHOD\*

Dealer Credit

BILLING ADDRESS  
AVESCO PCC TEST  
Ziedu Gravas  
Mārupe, MAR LV-2167  
Latvia

PURCHASE ORDER NUMBER (Optional)

UPLOAD ATTACHMENT (Optional)

### PICKUP AND DELIVERY INFORMATION

DELIVERY METHOD  
EXPRESS

DELIVERY ADDRESS  
Test Avesco  
"Ziedu Gravas"  
Marupe LV-2167  
Latvia  
+371 22222222

PLACE ORDER

ORDER SUBTOTAL: ..... €234.66 EUR  
Shipping/Miscellaneous: ..... €0.00 EUR  
Total Tax: ..... €49.28 EUR  
VAT 21,00 %: ..... €49.28 EUR  
ORDER TOTAL: ..... €283.94 EUR

Press here to apply campaigns Promo Code, additional field will open.

ADD PROMOTION CODE

Enter Promo Code and press on "APPLY" button.

PROMOTION CODE (Optional)

WINTER24

APPLY

ORDER SUBTOTAL: ..... €234.66 EUR  
Discount: ..... (€24.72) EUR  
Shipping/Miscellaneous: ..... €0.00 EUR  
Total Tax: ..... €44.09 EUR  
VAT 21,00 %: ..... €44.09 EUR  
ORDER TOTAL: ..... €254.03 EUR

The additional campaign discount will be added and reflected in "Order Subtotal" section.

PROMOTION CODE



WINTER24

The promo code will appear when successfully added.

After you place an order "Order Confirmation" information is reflected and dealership received your order for processing.

### ORDER CONFIRMATION

EXPORT PRINT

 Your credit limit has been exceeded. Please contact your dealer.

#### THANK YOU FOR YOUR ORDER!

Order Number: 60C055255  
Order Date: January 19, 2024, 10:58 AM

This is your order number given, when contact dealership you can refer on this number.

Pay attention if you see this notification your order will be held due to insufficient credit limit. You can contact the dealership for more information. In normal practice the dealer's representative will prepare prepayment invoice and get in touch with you. The same notification will be reflected in Parts.cat.com Order Confirmation email.

#### ORDER INFORMATION

**Account Number**  
LV42401-AVESCO PCC TEST

**Dealer Store**  
Avesco SIA

**Ordered by**  
Test Avesco

**Email Address**  
avescotest@avesco-cat.com

**Phone number**  
+371 22 222 222

**Request by date**  
January 19, 2024

#### PICKUP & DELIVERY

**Shipping Method**  
EXPRESS

**Shipping Address**  
Test Avesco  
"Ziedu Gravas"  
Marupe LV-2167  
Latvia  
+371 22222222  
arturs.lorencs@avesco-cat.com

#### BILLING & PAYMENT

**Billing Method**  
Dealer Credit

**Billing Address**  
AVESCO PCC TEST  
Ziedu Gravas  
Ziedu Gravas  
Mārupe, MAR LV-2167  
Latvia  
+371 22 222 222

**Promotion Code**  
WINTER24

#### SUMMARY OF CHARGES

ORDER SUBTOTAL:	€234.66 EUR
Discount:	(€24.72) EUR
Shipping/Miscellaneous:	€0.00 EUR
Total Tax:	€44.09 EUR
VAT 21,00 %:	€44.09 EUR
ORDER TOTAL:	€254.03 EUR

### 6. Control Center.

You will find the Control Center menu in the dropdown list of profile icon found in online shops homepage, press on it and the Control Center window will open. In the main screen of the Control Center, you will be able to see a list of subcategories, and overall info of Current Cart and Recently Viewed sections, as well as My Recent Orders, Saved Lists.

- MY ACCOUNT
- CONTROL CENTER
- PERSONAL INFORMATION
- SHOPPING PREFERENCES
- MY EQUIPMENT
- ADDRESS BOOK
- ORDERS & QUOTES
- ORDER HISTORY
- SAVED LISTS

#### SUPPORT OPTIONS

AVESCO BALTICS  
Avesco SIA  
"Ziedu gravas"  
Mārupe LV-2167  
Latvia

### CONTROL CENTER

TAKE A TOUR LEAVE FEEDBACK CUSTOMIZE

Subcategories are briefly explained further.

#### CURRENT CART

No items in your cart.

#### RECENTLY VIEWED

#### START SHOPPING FOR YOUR

D6N TRACK-TYPE TRACTOR  
Serial Number: DJY01127

QUICK ORDER D6N Parts & Resources D6N Parts Manuals SIS

#### ORDER INFORMATION

Account  
LV42401 - AVESCO PCC TEST

Dealer Store  
Avesco SIA

- Test Avesco  
DCN: #LV42401
- MY ACCOUNT
- CONTROL CENTER
- MY EQUIPMENT
- ORDER HISTORY
- SAVED LISTS
- CHANGE ACCOUNT/STORE
- LOG OUT

## 6.1 “Personal Information”

In this section you can review and edit Your personal information of profile

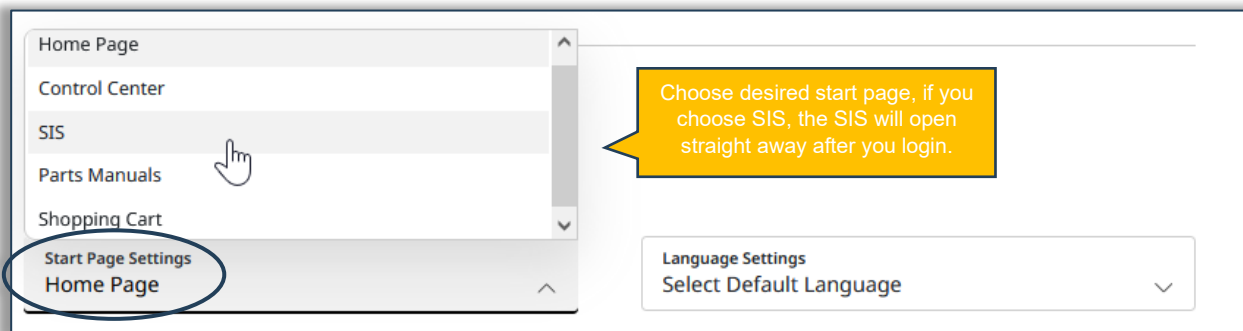
- Username – you can change your username
- Email – you can change your Email address
- Password – you can change your password
- Multi-Factor Authentication (MFA) Settings – you can set up a two–step verification process for login for security reasons.

## 6.2 “Shopping Preferences”

In this section you can modify and set your default settings to adjust online shop experience to your preferences.

**Dealer Settings** – You can set default billing customer account (if several are set for your profile). You can turn off popup window for choosing correct dealer store every time you log in by unchecking checkbox.

**Login** – You can define which page will open by default after login or choose a different language of system (Not full translation are provided and not for all languages).



**Order details** – Here you can toggle on and off allowance of editing contact information of person who placing an order.

**Shopping Cart** – select what information you want to be displayed on Shopping Cart page.

- **Add Notes to Cart** – Show line-item notes for each item in your cart
- **Display Order Information on Cart** – Select the information you want to display on your shopping cart page, including your account number, dealer store, equipment serial number, and much more.
- **Display Quick Order on Cart** – Quickly enter multiple part numbers or upload them directly from a spreadsheet.

**Pickup and Delivery** – skip a step at checkout by setting up your default pickup, delivery information.

- **Skip Pickup & Delivery Page** – toggle this preference ON to skip the Pickup & Delivery page at checkout. Fill out the required fields below and they will be used as your default information. We do not recommend disabling this page if your needs may vary case by case.
- **Fulfillment** – define required fields to use them always as default during order checkout.

**Payment information** – there is only one way active for Avesco Baltics to make a purchase based on users Credit Limit (Deler Credit).

- **Display Purchase Order Number** – select whether you want to see purchase order Number field on your Pickup & Delivery page.

**View** – save screen space and ink by configuring how images are displayed on the checkout page.

- **Show Images** – toggle this setting OFF to hide part images from the on-screen view and the print view.

### 6.3 My Equipment




In this section you can create and store a list of all your equipment, in a normal way if your equipment is registered under your billing customer number at dealership, equipment's should appear and be visible by default.


The screenshot shows the 'MY EQUIPMENT' page with several annotations:

- A green arrow points from the search bar to the 'Filtering' dropdown, which is set to '302.5C GBB00363'.
- A yellow callout box says: 'You can add equipment to the list manually, just press here' with an arrow pointing to the '+ ADD EQUIPMENT' button.
- A yellow callout box says: 'This icon means this equipment is chosen for search results.' with an arrow pointing to a star icon next to the first equipment entry.
- A yellow callout box says: 'Press on three dot icon to select or edit equipment. To view information related to chosen Equipment press on "Parts and Resources" (Chapter #6.3.1).' with an arrow pointing to the three-dot menu icon for the '320D L EXCAVATOR'.
- A dropdown menu is open for the '320D L EXCAVATOR', showing options: 'EDIT', 'SELECT', and '320D L PARTS & RESOURCES'. A hand cursor is pointing at the '320D L PARTS & RESOURCES' option.

Model	Serial Number	Asset ID
302.5C MINI HYDRAULIC EXCAVATOR	GBB00363	
259D SKID STEER LOADER		
302.7D MINI HYDRAULIC EXCAVATOR		
320D L EXCAVATOR	KGF00687	
434F BACKHOE LOADER	FLY00203	
434F2 BACKHOE LOADER	HWR00180	
938G II WHEEL-TYPE LOADER	PHN01733	JM2005005
950M WHEEL-TYPE LOADER	FTR00419	


### 6.3.1 Parts & Resources information related to chosen Equipment.

Search   Filtering results for:  




### 302.5C MINI HYDRAULIC EXCAVATOR

GBB00363



Shop Parts




Parts Diagram

Overview

All Parts

Maintenance and Repairs


Operation and Maintenance Manuals



### Shop Parts

Browse parts designed for your Cat® equipment to keep up with repairs and maintenance

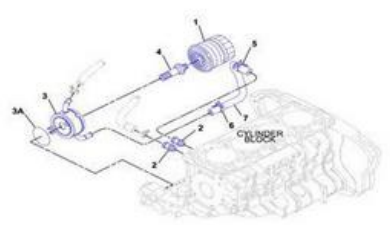
[Shop Parts](#)



### PM Kits and Self-Service Options

Browse maintenance kits and repair parts designed to help extend the life of your equipment.

[Shop Kits](#)



### Operation and Maintenance Manuals

Browse manuals and find the service information you need.

[Search Manuals](#)

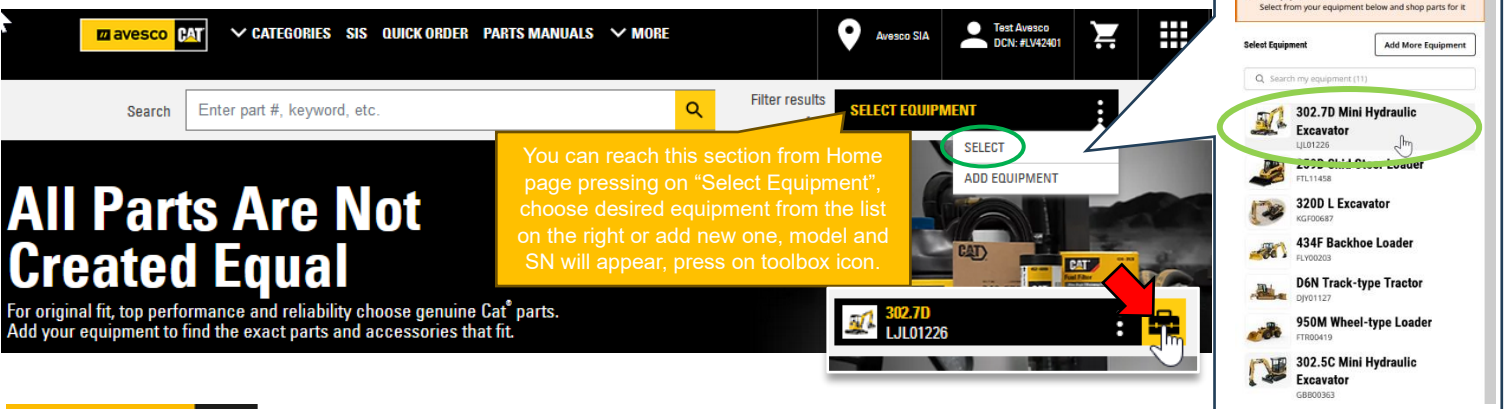
#### Following sections are available:

**Overview** – like the name says this is an overview page where some overall information and quick menus are reflected specifically for chosen equipment.

**All Part** – here you can search for parts by categories for the selected equipment.

**Maintenance and Repairs** – here you can find Maintenance kits (we are suggesting creating your own lists because different equipment modifications), and Self-Service Options (that means you can buy needed parts for different repairs and receive manuals how to perform desired jobs (Not for all repairs this option is available).

**Operation and Maintenance Manuals** – here you can find operational and maintenance guidebo



**All Parts Are Not Created Equal**  
For original fit, top performance and reliability choose genuine Cat® parts. Add your equipment to find the exact parts and accessories that fit.

**SELECT EQUIPMENT**

- SELECT
- ADD EQUIPMENT

**302.7D Mini Hydraulic Excavator**  
LJL01226

**302.5C Mini Hydraulic Excavator**  
GBB00363

### 6.4 Address Book.

Here you can define and create desired delivery addresses. The default address should be the one specified during the registration process.

#### MY ACCOUNT

CONTROL CENTER

PERSONAL INFORMATION

SHOPPING PREFERENCES

MY EQUIPMENT

ADDRESS BOOK

#### ORDERS & QUOTES

ORDER HISTORY

SAVED LISTS

## Address Book

Add New Address

To create a new address press here and fill all required fields marked with " \* "

The default address can be edited in the [Personal Information Page](#)

### avescotest Shipping

#### Shipping Address

Test Avesco  
"Ziedu Gravas"  
Latvia  
+371 22222222

Edit

Default

### Branch 2

#### Shipping Address

Test Avesco  
Kurzemes iela 16  
Tukums, LV-3101  
Latvia  
LV +371 22112211  
avescotest2@avesco-cat.com

Edit

Delete

We suggest creating addresses for jobsites, workshops, branches, or Automated Parcel Terminals so you could quickly choose them from the dropdown menu in "Delivery" page (if you chose to receive the order with delivery) during order placing.

### 6.5 Order History.

This is the place where you can find information about all your previously made orders.

#### MY ACCOUNT

- CONTROL CENTER
- PERSONAL INFORMATION
- SHOPPING PREFERENCES
- MY EQUIPMENT
- ADDRESS BOOK

#### ORDERS & QUOTES

- ORDER HISTORY
- SAVED LISTS

## ORDER HISTORY

EXPORT

### SEARCH OPTIONS ^

#### ORDER ORIGIN

Parts.Cat.com  Counter  PartStore

#### ACCOUNT

LV42401-AVESCO PCC TEST

Show only my orders

#### STORE LOCATION

Avesco SIA

#### ORDER / REFERENCE NUMBER ⓘ

#### DATE RANGE

1/19/22 - 1/19/24

#### STATUS

All

#### EQUIPMENT

Choose or Enter Equipment

Filter by equipment serial number, model number or asset ID.

#### PART NUMBER

#### PURCHASE ORDER NUMBER

#### SHIP/PICKUP LOCATION

#### MANAGE VIEW

You can customize search result list columns pressing on "MANAGE VIEW"

CLEAR FILTERS

SEARCH

Items Per Page 12 Page 1 of 3 1

Order / Reference Number	Order Date	Order Status	Purchase Order Number	Total Price
60C055260	1/19/24	ORDER PLACED View Order		€591.75
60C055259	1/19/24	ORDER PLACED View Order		€65.80
60C055255	1/19/24	ORDER PLACED View Order		03
60C055180	1/12/24	ORDER PLACED View Order		€52.21

Here you can define filter parameters for searching, for example setting date range, or filter by order reference, ...etc.

Here will be the list of your previously made orders. You will find Order reference, Order date, Order status, Total price (price on invoice with VAT)

Pressing on three dot icon you can reorder complete order putting the parts in shopping cart by pressing on "Reorder"

### 6.6 Saved Lists.

Here you can create your own lists, for example create part lists for maintenance kits, or create a list of parts which you re-order often.

Press here to create a new list. Check how to do that on next page.

Create List

#### MY ACCOUNT

CONTROL CENTER

PERSONAL INFORMATION

SHOPPING PREFERENCES

MY EQUIPMENT

ADDRESS BOOK

#### ORDERS & QUOTES

ORDER HISTORY

SAVED LISTS

## Saved Lists

### Search Options

Saved List Name

Item Number

Created By

Start Date  
Select Date

End Date  
Select Date

Clear Filters

Search

Manage View

1 - 3 of 3

Name	Items	Created By	Updated	List Type
PM4 2000h	7	Test Avesco	1/16/24	Private list
PM3	4	Test Avesco	1/16/24	Private list
PM2	3	Test Avesco	1/16/24	Public list

Press on the name of list to open it.

Shows how much items are in list

Press on three dot icon to open submenu

If you want to edit quantity in list, you can just overwrite it.

You can add all parts from list to shopping cart by pressing here.

Add parts to Cart

Mark as Favorite

Duplicate List

Delete the list

### PM2

Created by: Test Avesco Updated: 01/16/2024

#### ADD ITEMS TO LIST

Quantity\* Item Number\*

1 [input type="text"] [input type="text"]

1 [input type="text"] [input type="text"]

CLEAR ALL [ADD TO LIST]

#### ITEMS IN LIST

Show notes

Quantity	Product Description
1) [input type="text"]	1R-1807: Advanced Efficiency Engine Oil Filter
2) [input type="text"]	5153980k: 5153980k
3) [input type="text"]	1R-0762: Fuel Filter

[ADD ALL TO CART]

Name	Items
PM4 2000h	7
TestList1	3

Name	Items
PM4 2000h	7
TestList1	
PM3	
PM2	

- Add to Cart
- Mark Favorite
- Duplicate List
- Delete List



# PARTS.CAT.COM

## Online shopping user guide

### 6.6.1 How to create your own Part lists.

After pressing on “Create List” button popup window will appear, follow described steps.

**CREATE A LIST** [X]

Enter name of List

\* Enter a Saved List Name  
TestList1

Choose, list will be Private or Public list

Lists by default are private. Set to public to share with members in your organization

You can import spreadsheet or add parts manually later

Drag and Drop file here (or) [Upload]

Press “Create & Save” button to create a list.

[Create & Save] [Cancel]

When you create a new list by default, they are private. Set to public to share it with member in your organization. That means when your colleague will login Parts.cat.com this “Public” list will be visible for him as well in “SAVED LIST” section.

Created list appears in the list. To modify the list press on it.

Name	Items	Created By	Updated	List Type
TestList1	0	Test Avesco	1/19/24	Public
PM4 2000h	7	Test Avesco	1/16/24	Public
PM3	4	Test Avesco	1/16/24	Private

**TESTLIST1** [EDIT]

Created by: Test Avesco Updated: 01/19/2024 SHARED

**ADD ITEMS TO LIST**

Add desired quantity and Part Numbers

Quantity*	Item Number*
1	1r1808
1	1r0751
2	5p8500

Press here to add parts to the created list

[CLEAR ALL] [ADD TO LIST]