



# 330 GC

## Hydraulic Excavator

# Technical Specifications

Configurations and features may vary by region. Please consult your Cat® dealer for availability in your area.

### Table of Contents

<b>Specifications</b> .....	<b>2</b>
Engine .....	2
Swing Mechanism .....	2
Weights .....	2
Track .....	2
Drive .....	2
Hydraulic System .....	2
Service Refill Capacities .....	2
Standards .....	2
Sound Performance .....	2
Operating Weights and Ground Pressures .....	3
Major Component Weights .....	3
Dimensions .....	4
Working Ranges and Forces .....	5
Bucket Specifications and Compatibility .....	6
Attachments Offering Guide .....	7
<b>Standard and Optional Equipment</b> .....	<b>8</b>
<b>Dealer Installed Kits and Attachments</b> .....	<b>10</b>

# 330 GC Hydraulic Excavator Specifications

## Engine

Engine Model	Cat® C7.1	
Engine Power – ISO 9249	157.8 kW	212 hp
Engine Power – ISO 14396	159 kW	213 hp
Bore	105 mm	4 in
Stroke	135 mm	5 in
Displacement	7.01 L	428 in <sup>3</sup>

- Meets China Nonroad Stage III emission standards, equivalent to U.S. EPA Tier 3/EU Stage IIIA.
- Recommended for use up to 4500 m (14,760 ft) altitude with engine power derate above 3000 m (9,840 ft).
- Net power is tested per ISO 9249. Standards in effect at the time of manufacture.
- Net power advertised is the power available at the flywheel when the engine is equipped with fan, air intake system, exhaust system and alternator.
- Rated speed at 1,800 rpm.

## Swing Mechanism

Swing Speed	11.50 rpm	
Maximum Swing Torque	105 kN·m	77,370 lb-ft

## Weights

Operating Weight	28 800 kg	63,500 lb
------------------	-----------	-----------

- Long undercarriage, Reach boom, R3.2 m (10'6") stick, HD 1.54 m<sup>3</sup> (2.01 yd<sup>3</sup>) HD bucket, 600 mm (24") triple grouser shoes and 6.7 t (14,770 lb) counterweight.

## Track

Standard Track Shoes Width	600 mm	24 in
Optional Track Shoes Width	800 mm	31 in
Number of Shoes (each side)	45	
Number of Track Rollers (each side)	7	
Number of Carrier Rollers (each side)	2	

## Drive

Gradeability	35°/70%	
Maximum Travel Speed	5.3 km/h	3.3 mph
Maximum Drawbar Pull	247 kN	55,528 lbf

## Hydraulic System

Main System – Maximum Flow – Implement	560 L/min (280 × 2 pumps)	148 gal/min (74 × 2 pumps)
Maximum Pressure – Equipment	35 000 kPa	5,075 psi
Maximum Pressure – Travel	35 000 kPa	5,075 psi
Maximum Pressure – Swing	28 400 kPa	4,120 psi
Boom Cylinder – Bore	140 mm	6 in
Boom Cylinder – Stroke	1407 mm	55 in
Stick Cylinder – Bore	150 mm	6 in
Stick Cylinder – Stroke	1646 mm	65 in
Bucket Cylinder – Bore	135 mm	5 in
Bucket Cylinder – Stroke	1156 mm	46 in

## Service Refill Capacities

Fuel Tank Capacity	474 L	125.2 gal
Cooling System	25 L	6.6 gal
Engine Oil	25 L	6.6 gal
Swing Drive	10 L	2.6 gal
Final Drive (each)	5.5 L	1.5 gal
Hydraulic System (including tank)	310 L	81.9 gal
Hydraulic Tank	147 L	38.8 gal

## Standards

Brakes	ISO 10265:2008
Cab/ROPS	ISO 12117-2:2008
FOGS (optional)	ISO 10262-2:1998

## Sound Performance

ISO 6395:2008 (external)	103 dB(A)
ISO 6396:2008 (inside cab)	70 dB(A)

- Hearing protection may be needed when operating with an open operator station and cab (when not properly maintained or doors/windows open) for extended periods or in a noisy environment.

# 330 GC Hydraulic Excavator Specifications

## Operating Weights and Ground Pressures

	600 mm (24") Triple Grouser Shoes		600 mm (24") HD Triple Grouser Shoes		800 mm (31") Triple Grouser Shoes	
	Weight	Ground Pressure	Weight	Ground Pressure	Weight	Ground Pressure
	kg (lb)	kPa (psi)	kg (lb)	kPa (psi)	kg (lb)	kPa (psi)
<b>Base Machine with 6.7 t (14,770 lb) Counterweight and Long Undercarriage</b>						
Reach Boom + R3.2CB2 (10'6") Stick + 1.54 m <sup>3</sup> (2.01 yd <sup>3</sup> ) HD Bucket	28 800 (63,500)	56 (8.1)	29 010 (63,960)	56 (8.1)	30 100 (66,400)	44 (6.4)
Reach Boom + R2.65CB2 (8'8") Stick + 1.54 m <sup>3</sup> (2.01 yd <sup>3</sup> ) HD Bucket	28 780 (63,500)	55 (7.9)	29 150 (64,300)	56 (8.1)	30 010 (66,200)	43 (6.2)

All operating weights include a 90% fuel tank with 75 kg (165 lb) operator.

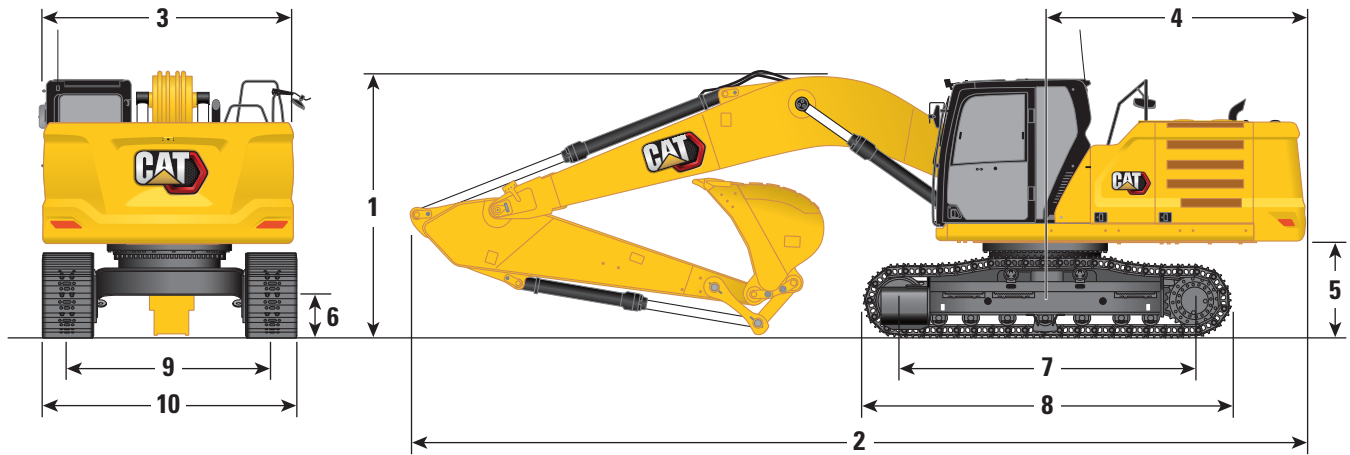
## Major Component Weights

	kg	lb
Base machine (6700 kg [14,770 lb] counterweight, upper frame, Long undercarriage with rollers) with boom cylinders and weight of 90% fuel tank and 75 kg (165 lb) operator included	24 000	52,900
Track Shoes:		
600 mm (24") Width, 11 mm (0.43") Thick, Triple Grouser Track Shoes	3620	8,000
600 mm (24") Width, 13 mm (0.51") Thick, HD Triple Grouser Track Shoes	4200	9,300
800 mm (31") Width, 13 mm (0.51") Thick, Triple Grouser Track Shoes with Step Extension for ISO 2867	4590	10,100
Two Boom Cylinders	490	1,080
Weight of 90% Fuel Tank and 75 kg (165 lb) Operator	460	1,010
Counterweight:		
6.7 t (14,770 lb) Counterweight	6700	14,770
Undercarriage:		
Long Undercarriage with Rollers	5832	12,857
Boom (including lines, pins, stick cylinder):		
Reach Boom 6.15 m (20'2")	2300	5,070
Sticks (including lines, pins, bucket cylinder, bucket linkage):		
Reach Stick R3.2CB2 (10'6")	1440	3,170
Reach Stick R2.65CB2 (8'8")	1350	2,980
Buckets (without linkage, with tips and sidecutters):		
1.60 m <sup>3</sup> (2.09 yd <sup>3</sup> ) HD, CB Linkage	1320	2,910
1.54 m <sup>3</sup> (2.01 yd <sup>3</sup> ) SD, CB Linkage	1500	3,310
Quick Couplers:		
Pin Grabber QC CB with Pins	530	1,170
Pin Grabber QC CB without Pins	500	1,100
Dedicated QC	430	950

# 330 GC Hydraulic Excavator Specifications

## Dimensions

All dimensions are approximate and may vary depending on bucket selection.



### Boom Option

Reach Boom  
6.15 m (20'2")

### Stick Options

Reach Stick

R3.2CB2 (10'6")

R2.65CB2 (8'8")

#### 1 Machine Height:

	R3.2CB2 (10'6")		R2.65CB2 (8'8")	
Cab Height	3050 mm	10'0"	3050 mm	10'0"
FOGS Height	3190 mm	10'6"	3190 mm	10'6"
Handrails Height	3050 mm	10'0"	3050 mm	10'0"
With Boom/Stick/Bucket Installed	3400 mm	11'2"	3450 mm	11'4"
With Boom/Stick Installed	3380 mm	11'1"	3380 mm	11'1"
With Boom Installed	3050 mm	10'0"	3050 mm	10'0"

#### 2 Machine Length:

With Boom/Stick/Bucket Installed	10 420 mm	34'2"	10 420 mm	34'2"
With Boom/Stick Installed	10 420 mm	34'2"	10 420 mm	34'2"
With Boom Installed	9230 mm	30'3"	9230 mm	30'3"

#### 3 Upperframe Width without Walkways

	2940 mm	9'8"	2940 mm	9'8"
--	---------	------	---------	------

#### 4 Tail Swing Radius

	3130 mm	10'3"	3130 mm	10'3"
--	---------	-------	---------	-------

#### 5 Counterweight Clearance

	1110 mm	3'8"	1110 mm	3'8"
--	---------	------	---------	------

#### 6 Ground Clearance

	490 mm	1'7"	490 mm	1'7"
--	--------	------	--------	------

#### 7 Length to Center of Rollers

	3990 mm	13'1"	3990 mm	13'1"
--	---------	-------	---------	-------

#### 8 Track Length

	4850 mm	15'10"	4850 mm	15'10"
--	---------	--------	---------	--------

#### 9 Track Gauge

	2390 mm	7'10"	2390 mm	7'10"
--	---------	-------	---------	-------

#### 10 Undercarriage Width:

600 mm (24") Shoes	3190 mm	10'6"	3190 mm	10'6"
800 mm (31") Shoes	3390 mm	11'1"	3390 mm	11'1"

#### Bucket Type

HD

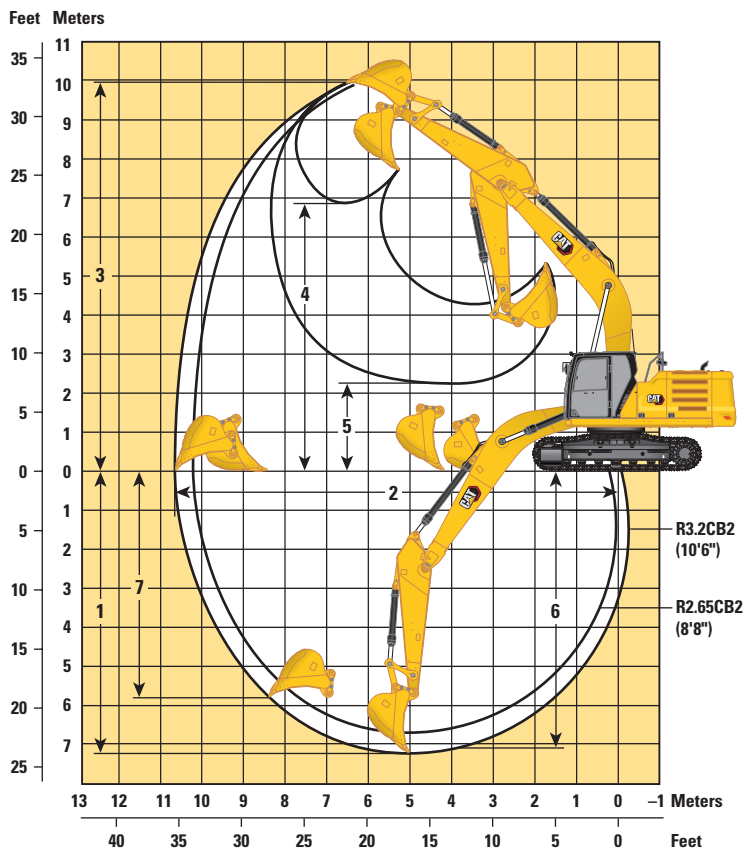
HD

Bucket Capacity	1.60 m <sup>3</sup>	2.09 yd <sup>3</sup>	1.60 m <sup>3</sup>	2.09 yd <sup>3</sup>
Bucket Tip Radius	1662 mm	5'5"	1662 mm	5'5"

# 330 GC Hydraulic Excavator Specifications

## Working Ranges and Forces

All dimensions are approximate and may vary depending on bucket selection.



### Boom Option

Reach Boom  
6.15 m (20'2")

### Stick Options

Reach Stick

	R3.2CB2 (10'6")		R2.65CB2 (8'8")	
	mm	ft/in	mm	ft/in
1 Maximum Digging Depth	7260	23'10"	6710	22'0"
2 Maximum Reach at Ground Line	10 690	35'1"	10 210	33'6"
3 Maximum Cutting Height	10 020	32'10"	9910	32'6"
4 Maximum Loading Height	6940	22'9"	6790	22'3"
5 Minimum Loading Height	2280	7'6"	2830	9'3"
6 Maximum Depth Cut for 2440 mm (8 ft) Level Bottom	7100	23'4"	6530	21'5"
7 Maximum Vertical Wall Digging Depth	6030	19'9"	5720	18'9"
Bucket Digging Force (ISO)	179 kN	40,240 lbf	179 kN	40,240 lbf
Stick Digging Force (ISO)	126 kN	28,330 lbf	145 kN	32,600 lbf
Bucket Type	HD		HD	
Bucket Capacity	1.60 m <sup>3</sup>	2.09 yd <sup>3</sup>	1.60 m <sup>3</sup>	2.09 yd <sup>3</sup>
Bucket Tip Radius	1662 mm	5'5"	1662 mm	5'5"

# 330 GC Hydraulic Excavator Specifications

## Bucket Specifications and Compatibility

	Undercarriage								Long	
	Linkage	Width		Capacity		Weight		Fill	6.7 mt (14,770 lb)	
		mm	in	m <sup>3</sup>	yd <sup>3</sup>	kg	lb	%	Reach	
									R3.2 (10'6")	R2.65 (8'8")
<b>Pin-On (No Quick Coupler)</b>										
General Duty	CB	1400	55	1.54	2.02	1125	2,480	100	●	●
Heavy Duty	CB	1300	51	1.36	1.78	1173	2,587	100	●	●
	CB	1350	53	1.45	1.90	1194	2,633	100	●	●
	CB	1450	57	1.57	2.05	1280	2,822	100	●	●
	CB	1450	57	1.60	2.09	1274	2,809	100	●	●
	CB	1500	60	1.65	2.16	1308	2,884	100	⊙	●
	CB	1600	63	1.80	2.36	1348	2,973	100	⊙	⊙
	CB	1650	66	1.90	2.49	1369	3,019	100	⊖	⊙
Severe Duty	CB	1300	51	1.36	1.78	1321	2,911	90	●	●
	CB	1350	54	1.45	1.90	1346	2,967	90	●	●
	CB	1400	56	1.54	2.02	1421	3,133	90	●	●
Maximum load with pin-on (payload + bucket)								kg	4490	4915
								lb	9,899	10,836
<b>With Pin Grabber Quick Coupler</b>										
General Duty	CB	1400	55	1.54	2.02	1125	2,480	100	⊙	●
Heavy Duty	CB	1300	51	1.36	1.78	1173	2,587	100	●	●
	CB	1350	53	1.45	1.90	1194	2,633	100	⊙	●
	CB	1450	57	1.57	2.05	1280	2,822	100	⊖	⊙
	CB	1450	57	1.60	2.09	1274	2,809	100	⊖	⊙
	CB	1500	60	1.65	2.16	1308	2,884	100	⊖	⊙
	CB	1600	63	1.80	2.36	1348	2,973	100	⊖	⊖
	CB	1650	66	1.90	2.49	1369	3,019	100	○	⊖
Severe Duty	CB	1300	51	1.36	1.78	1321	2,911	90	●	●
	CB	1350	54	1.45	1.90	1346	2,967	90	●	●
	CB	1400	56	1.54	2.02	1421	3,133	90	⊙	●
Maximum load with coupler (payload + bucket)								kg	3964	4389
								lb	8,739	9,676

The above loads are in compliance with hydraulic excavator standard EN474-5:2006+A3:2013, they do not exceed 87% of hydraulic lifting capacity or 75% of tipping capacity with front linkage fully extended at ground line with bucket curled.

Capacity based on ISO 7451:2007.

Bucket weight with General Duty tips.

### Maximum Material Density:

- 2100 kg/m<sup>3</sup> (3,500 lb/yd<sup>3</sup>)
- ⊙ 1800 kg/m<sup>3</sup> (3,000 lb/yd<sup>3</sup>)
- ⊖ 1500 kg/m<sup>3</sup> (2,500 lb/yd<sup>3</sup>)
- 1200 kg/m<sup>3</sup> (2,000 lb/yd<sup>3</sup>)

Caterpillar recommends using appropriate work tools to maximize the value customers receive from our products. Use of work tools, including buckets, which are outside of Caterpillar's recommendations or specifications for weight, dimensions, flows, pressures, etc. may result in less-than-optimal performance, including but not limited to reductions in production, stability, reliability, and component durability. Improper use of a work tool resulting in sweeping, prying, twisting and/or catching of heavy loads will reduce the life of the boom and stick.

# 330 GC Hydraulic Excavator Specifications

## Attachments Offering Guide

Not all Attachments are available in all regions. Consult your Cat dealer for configurations available in your region.

Match

### PIN-ON ATTACHMENTS

Undercarriage	L		
Counterweight	6.7 mt (14,770 lb)		
Boom Type	Reach		
Stick Lengths	2.6 m (8'8")	3.2 m (10'6")	
Hydraulic Hammers	H120 S	✓	✓
	H130 GC	✓	✓
	H130 GC Side Mount	✓	✓
	H130 GC S	✓	✓
	H130 S	✓	✓
	H140 GC	✓	✓
	H140 GC S	✓	✓
	H160 GC	✓	✓
	H160 GC S	✓	✓
Compactors (Vibratory Plate)	CVP110	✓	✓

### CAT PIN GRABBER COUPLER ATTACHMENTS

Hydraulic Hammers	H120 S	✓	✓
	H130 GC	✓	✓
	H130 GC Side Mount	✓	✓
	H130 GC S	✓	✓
	H130 S	✓	✓
	H140 GC	✓	✓
	H140 GC S	✓	✓
	H160 GC	✓	✓
	H160 GC S	✓	✓
Compactors (Vibratory Plate)	CVP110	✓	✓

\*Working range front only.

# 330 GC Standard and Optional Equipment

## Standard and Optional Equipment

Standard and optional equipment may vary. Consult your Cat dealer for details.

	Standard	Optional		Standard	Optional
<b>CAB</b>			<b>ENGINE</b>		
ROPS, standard sound suppression	✓		Two selectable modes: Power, Smart	✓	
High-resolution 203 mm (8") LCD touchscreen monitor	✓		Automatic engine speed control	✓	
Automatic bi-level air conditioner	✓		Automatic engine idle-shutdown	✓	
Jog dial and shortcut keys for monitor control	✓		4500 m (14,760 ft) altitude capability with engine power derate above 3000 m (9,840 ft)	✓	
Keyless push-to-start engine control	✓		52° C (125° F) high-ambient cooling capability without derate	✓	
Height-adjustable console, three steps with tool	✓		-18° C (0° F) cold start capability	✓	
Fixed left-side console	✓		-32° C (-25° F) cold start capability		✓
Mechanically adjustable seat suspension	✓		2 × 115 amp dual alternator	✓	
51 mm (2") orange seat belt	✓		Sealed double element air filter with integrated precleaner	✓	
Bluetooth® integrated radio (no USB, aux port or microphone)	✓		Two-stage fuel filtration with water separator and indicator	✓	
12V DC outlets	✓		Electric fuel priming pump	✓	
Document storage	✓		On-demand electric cooling fans with auto-reverse function	✓	
Cup and bottle holders	✓		Biodiesel capability up to B20	✓	
Openable two-piece front window	✓		<b>HYDRAULIC SYSTEM</b>		
Upper radial wiper with washer	✓		Electronic main control valve	✓	
Openable steel hatch	✓		Electric boom regeneration circuit	✓	
LED dome light	✓		Stick regeneration circuit	✓	
Roller front sunscreen	✓		Automatic hydraulic oil warm up	✓	
Roller rear sunscreen		✓	Automatic two-speed travel	✓	
Rear window emergency exit	✓		Boom and stick drift reduction valve	✓	
Washable floor mat	✓		High performance hydraulic return filter	✓	
Beacon ready	✓		Final drive with bio hydraulic oil capable travel motor	✓	
<b>CAT TECHNOLOGY</b>			Advanced Tool Control (two pump, one/ two way high-pressure flow)		✓
Cat Product Link™	✓		Basic Tool Control (one pump, one way high-pressure flow)		✓
Auto hammer stop	✓		Quick Coupler circuit for Cat Pin Grabber and CW Dedicated		✓

(continued on next page)



## Standard and Optional Equipment *(continued)*

Standard and optional equipment may vary. Consult your Cat dealer for details.

	Standard	Optional		Standard	Optional
<b>BOOM, STICKS AND LINKAGE</b>			<b>SERVICE AND MAINTENANCE</b>		
6.15 m (20'2") reach boom	✓		Grouped location of engine oil and fuel filters	✓	
3.2 m (10'6") reach stick, CB2 Linkage		✓	Ground-level second dipstick for engine oil	✓	
2.65 m (8'8") reach stick, CB2 Linkage		✓	Side entry to service platform	✓	
Bucket Linkage, CB2 family	✓		Scheduled Oil Sampling (S·O·S <sup>SM</sup> ) ports	✓	
<b>UNDERCARRIAGE AND STRUCTURES</b>			Electric refueling pump with automatic shut off		✓
Track guiding guard, center	✓		Radiator screen		✓
Bottom guard	✓		<b>SAFETY AND SECURITY</b>		
Travel motor guard	✓		Rearview camera and right-side mirror	✓	
Grease lubricated track	✓		Right-hand-sideview camera		✓
Tie-down points on base frame	✓		Secure start with PIN code	✓	
6700 kg (14,770 lb) counterweight	✓		Caterpillar One Key security system	✓	
600 mm (24") triple grouser track shoes		✓	Lockable external tool/storage box	✓	
600 mm (24") HD triple grouser track shoes		✓	Lockable door, fuel, and hydraulic tank locks	✓	
800 mm (31") triple grouser track shoes		✓	Lockable fuel drain compartment	✓	
<b>ELECTRICAL SYSTEM</b>			Service platform with anti-skid plate and recessed bolts	✓	
2 × Machine Electronic Control Module	✓		RH handrail and hand hold (ISO 2867:2011 compliant)	✓	
Maintenance-free 1,000 CCA batteries (×2)	✓		Signaling/warning horn	✓	
After engine shutdown, programmable time delay LED working lights: one chassis mounted, one LH boom mounted	✓		Ground-level secondary engine shutoff switch in cab	✓	
Centralized electrical disconnect switch	✓		Hydraulic lock out lever	✓	
LED chassis light, LH and RH boom lights, cab lights	✓		Travel alarm		✓
Compatible with Electronic Technician	✓				

# 330 GC Attachments

## Dealer Installed Kits and Attachments

Attachments may vary. Consult your Cat dealer for details.

### CAB

- Polycarbonate roof hatch

### GUARDS

- Swivel guard
- Falling object guard system (not compatible with cab light cover, rain protector)
- Mesh guard full front (not compatible with cab light cover, rain protector)
- Mesh guard lower half front

For more complete information on Cat products, dealer services, and industry solutions, visit us on the web at [www.cat.com](http://www.cat.com)

© 2020 Caterpillar  
All rights reserved

Materials and specifications are subject to change without notice. Featured machines in photos may include additional equipment. See your Cat dealer for available options.

CAT, CATERPILLAR, LET'S DO THE WORK, their respective logos, "Caterpillar Corporate Yellow," the "Power Edge" and Cat "Modern Hex" trade dress as well as corporate and product identity used herein, are trademarks of Caterpillar and may not be used without permission.

AEXJ0078-02 (11-2020)  
Replaces AEXJ0078-01  
Build Number: 07C  
(China)

