

# 325

## HYDRAULIC EXCAVATOR



---

Net Power – ISO 9249  
Operating Weight  
Maximum Digging Depth

128.5 kW (172 hp)  
22 800 kg (5,300 lb)  
6600 m (21.8 ft)



# 325

## HYDRAULIC EXCAVATOR

The Cat® 325 Excavator brings premium performance with simple-to-use technologies like Cat Grade with 2D, Grade Assist, Lift Assist and Payload – all standard equipment from the factory to help boost operator efficiencies. Combine these features with a Reduced Radius (RR) or Compact Radius (CR) design for working in tight spaces, an ergonomic cab, extended maintenance intervals that help lower your maintenance costs, and a power system that helps reduce fuel consumption and you have a low-cost-per-unit-of-production excavator that's perfect for medium- to heavy-duty applications.



### LOW FUEL CONSUMPTION

Electro-hydraulic pump and main control valve. Smart mode. Auto Reversing E-fan system.

### HIGH PERFORMANCE

Help boost productivity with standard technology. Heavy counterweight to maximize lift capability. Blade float function.

### LOWER MAINTENANCE COSTS

Longer fuel life, hydraulic oil, and air filters. No pilot or case drain filters. Ground-level engine oil level check.

# LATEST FEATURES



## Reduced Radius Configuration

- The 325 Reduced Radius configuration has a tail swing radius of 2030 mm (6.7 ft), which is more compact than the smaller size class Cat 313 Hydraulic Excavator.
- Standard undercarriage allows for transport on 2.8 m (9'2") width trailers, and can easily be configured to weigh less than 25 metric tons (55,120 lb) – as low as 24 mt (52,910 lb)
- Safety prioritized design with reduced tail swing radius, standard rear and right-hand-side view cameras, an optional 360° camera, and optional Cat Detect to help minimize risk of colliding with nearby structures, machines, and jobsite personnel.
- Designed for demolition applications with optional lifting points to transport the machine on top of structures, and specialized linkage to prevent the machine from bottoming out while operating a concrete crusher at extreme angles.

## Machine Setup Simplification

- At the touch of fingertips and navigating user-friendly icons, the latest operator oriented User Interface (UI) maximizes uptime and gets crews to work without delay. From re-ordering work tool lists to creating new work tool combinations as needed, operators can quickly set up machines and easily access information.
- The interface allows operators to maintain accuracy and makes the most of every second of their shift. Adding the ability to input couplers and attachments into the system makes setting up work tool combinations highly efficient by significantly reducing calibration time. It also eliminates the need to measure up again when changing Cat work tool attachments and makes it manageable for a single person to check and adjust for bucket wear.

## Cat Grade 3D Ready

- The Cat Grade 3D Ready option includes all the hardware required for the Grade with 3D system, installed and tested from the factory. This option provides an easier upgrade path for customers who want to add Grade with 3D after their initial purchase. To activate, contact your Cat dealer to purchase the required 3D software licenses. Licenses can be installed remotely or manually loaded onto the machine.

## Cat Payload and Advanced Payload\*

- Cat Payload provides operators with on-the-go weighing to help them hit load targets and avoid overloading, underloading, or misloading materials. Advanced Payload is a system upgrade that offers expanded features and capabilities, including custom tags, daily totals, and electronic ticketing. Combine Payload with VisionLink™ \*\* to analyze jobsites and individual assets for remote management of production targets and key metrics.

*\*Payload technologies are not legal for trade.*

*\*\*VisionLink subscription required.*

*Not all features are available in all regions. Please check with your local Cat dealer for specific offering availability in your area.  
Build Number: 07H*

# HIGH PERFORMANCE DIGGING AND LIFTING

- Smart mode helps reduce fuel consumption by automatically matching engine and hydraulic power to digging conditions.
- Compact radius helps you work in tight spaces.
- High swing torque makes working on slopes easier.
- Increase operating efficiency with standard Cat Technologies that help lower operator fatigue and your operating costs, including fuel consumption and daily maintenance.
- C4.4 engine that meets emission standards. An aftertreatment system that requires no maintenance or downtime.
- The advanced hydraulic system provides the optimum balance of power and efficiency while giving you the control you need for precise digging requirements.
- Match the excavator to the job with power modes; let Smart mode automatically match engine and hydraulic power to digging conditions.
- Advansys™ bucket tips increase penetration and improve cycle times. Tip changes can be done quickly with a simple lug wrench instead of a hammer or special tool, improving safety and uptime.
- Auxiliary hydraulic options give you the versatility to use a wide range of Cat attachments.
- Don't let the temperature stop you from working. The excavator has a standard high-ambient temperature capability of 50° C (122° F) with de-rate and cold start capability of -18° C (0° F). An optional -32° C (-25° F) cold start package is available.



# BOOST EFFICIENCY AND PRODUCTIVITY WITH INTEGRATED CAT TECHNOLOGIES



- The latest operator oriented User Interface (UI) has been designed to maximize uptime by allowing operators to easily reorder work tool lists and quickly create new work tool combinations. It also eliminates the need to measure up again when changing Cat work tool attachments and makes it manageable for a single person to check and adjust for bucket wear.
- Leverage standard Cat Grade with 2D system with indicate-only and laser capability to help boost productivity.
- Want a 3D system to improve your digging results? Caterpillar single antenna global navigation satellite system (GNSS) makes it easy by giving you visual and auditory guidance to grade. Plus, you can create and edit designs on the touchscreen monitor while you're on the job. If your application calls for a dual antenna system, it's easy to upgrade.
- Already invested in another brand's 3D system? No problem. Standard Cat technology like Grade with 2D can readily integrate with that system to give you the precise results you need.
- All Cat Grade systems are compatible with radios and base stations from Trimble, Topcon, and Leica. Already invested in a grade infrastructure? You can install grade systems from Trimble, Topcon, and Leica onto the machine.
- The Cat Grade 3D Ready option includes all the hardware required for the Grade with 3D system, installed and tested from the factory. Activation requires the purchase of additional 3D software licenses.
- Cat Grade with Assist helps operators stay on grade simply and effortlessly with semi-autonomous digging. It automates boom, stick, and bucket movements to deliver more accurate cuts with less effort.
- Keep the tracks on ground in lifting and hard digging with Cat Boom Assist.
- Set your desired bucket angle and let Cat Bucket Assist automatically maintain the angle in sloping, leveling, fine grading, and trenching applications.
- Automatically stop excavator swing at operator-defined set points in truck loading and trenching applications with Cat Swing Assist, which will help you use less effort and consume less fuel.
- Cat Payload helps you achieve precise load targets to improve your operating efficiency. Pick up a load of material – with a bucket and thumb combination or grapple and clamshell attachments – and get a real-time weight estimate without swinging.
- Advanced Payload is a system upgrade that offers expanded features and capabilities, including custom tags, daily totals, and electronic ticketing.
- Combine Payload with VisionLink and remotely manage your production targets and key metrics.

# TAKE THE GUESSWORK OUT OF MANAGING YOUR EQUIPMENT

- VisionLink provides actionable data insights for all assets – regardless of fleet size or equipment manufacturer.\* Review equipment data from your desktop or mobile device to maximize uptime and optimize assets. Equipment management features provide up-to-date asset tracking of your entire fleet. You can track asset location, operating hours, fuel level, health issues, and overall utilization. Monitor equipment health with fault codes, fluid analysis, and inspection due dates. It's all about making informed, data-based decisions to help reduce operating costs. Productivity management features enable you to analyze overall jobsite performance. You'll be able to track tonnage moved, production targets, and payload, as well as Grade 3D and compaction data. These vital metrics help you to reduce costs and improve jobsite operational efficiency.
- Cat Inspect is a mobile application that allows you to easily perform digital preventative maintenance (PM) checks, inspections, and daily walkarounds. Inspections can easily be integrated with other Cat data systems like VisionLink so you can keep a close eye on your fleet.
- Remote Troubleshoot is a mobile application that allows your Cat dealer to perform diagnostic testing on your connected machine remotely to help ensure that issues are resolved quickly and with less downtime.
- Remote Flash is a mobile application that allows you to update onboard software without a technician being present, allowing you to initiate software updates when convenient, increasing your overall operating efficiency.
- The Cat PL161 attachment locator allows you to track attachments across all worksites, reduce the number of lost attachments, and plan for attachment maintenance and replacement. The work tool recognition feature automatically adjusts machine settings based on the selected tool.

*\*Data field availability can vary by equipment manufacturer.*



# WORK IN COMFORT



- Choose between Comfort, Deluxe and Premium cabs – all with automatic climate control (consult your local dealer on availability in your region).
- The Comfort cab is equipped with a mechanical suspension seat. The Deluxe seat is heated and air adjustable. The Premium seat is heated and cooled and adjusts automatically.
- Get in and out of the cab easier using the tip-up left console available in the deluxe and premium cabs.
- Improved viscous mounts help reduce cab vibration, increasing operator comfort and efficiency.
- Control the excavator comfortably with easy-to-reach controls all located in front of you.
- Stow your gear with plenty of in-cab storage beneath and behind the seat and in the consoles. A cup holder, document holder, bottle holder, and coat hook are also provided.
- Use the standard radio's USB ports and Bluetooth® technology to connect personal devices and make hands-free calls.

# SIMPLE TO OPERATE



- Start the engine with a push button; use a Bluetooth key fob\*, or the unique Operator ID function.
- Program your power mode and joystick preferences using Operator ID; the excavator will remember what you set each time you go to work.
- Navigate quickly on the standard high-resolution 203 mm (8 in) touchscreen monitor, or with the optional 254 mm (10 in) touchscreen monitor (available on the Deluxe and Premium cabs only), or with the aid of the jog dial control.
- Not sure how a function works or how to maintain the excavator? Always have the operator's manual at your fingertips in the touchscreen monitor.
- Make operating easier with the touch of a joystick button. Additional auxiliary relays allow you to power on or turn off a CB radio, beacon light, and even a dust suppression watering system without taking your hands off the joysticks.
- Tiltrotator attachments – ours or other brands-work seamlessly with Cat 2D Grade, Assist, Payload, and E-Fence. With no additional hardware required, all you have to do is simply select "Third Party Tiltrotator System Installation" in the monitor, do the calibration, and get to work.
- Find the tool you need – even if it's hidden beneath overgrowth or debris. The excavator's onboard Bluetooth reader can locate any work tool equipped with Cat asset tracking devices up to a range of 60 m (200 ft).\*
- Make moving the excavator much easier with Cat Stick Steer. Simply push a button and use one hand to travel and turn instead of both hands or feet on levers or pedals.

*\*Not available with the Comfort cab.*

# MAINTENANCE



- Expect lower maintenance cost with extended and more synchronized maintenance intervals. All maintenance checkpoints are accessible at ground level, resulting in safe, faster, and easier daily maintenance checks.
- Perform all daily maintenance inspections at ground level.
- Check engine oil level quickly and safely with the ground-level engine oil dipstick; fill and check engine oil on top of the machine with a conveniently located second dipstick.
- Track your excavator's filter life and maintenance intervals via the in-cab monitor.
- No required maintenance on the Cat Clean Emissions Module.
- Using Cat genuine oil and filters and doing your typical S-O-S<sup>SM</sup> monitoring will extend the current service interval to 1,000 hours, giving you greater uptime to do more work.
- S-O-S ports are on ground level, simplifying maintenance and allowing for quick, easy extraction of fluid samples for analysis.
- Expect the latest air intake filter with pre-cleaner to last up to 1,000 hours.
- The latest hydraulic oil filter offers high-quality filtration performance, features anti-drain valves to keep the oil clean when the filter is replaced, and provides an extended 3,000-hour replacement interval for efficiency and convenience.
- High-efficiency cooling fans run only when needed; you can program intervals so they automatically reverse to keep cores clean without interrupting your work.
- Boost productivity with proactive service reminders. The integrated vehicle health management system alerts the operator with step-by-step service guidance along with parts needed so you don't experience any unnecessary downtime.

# SAFETY

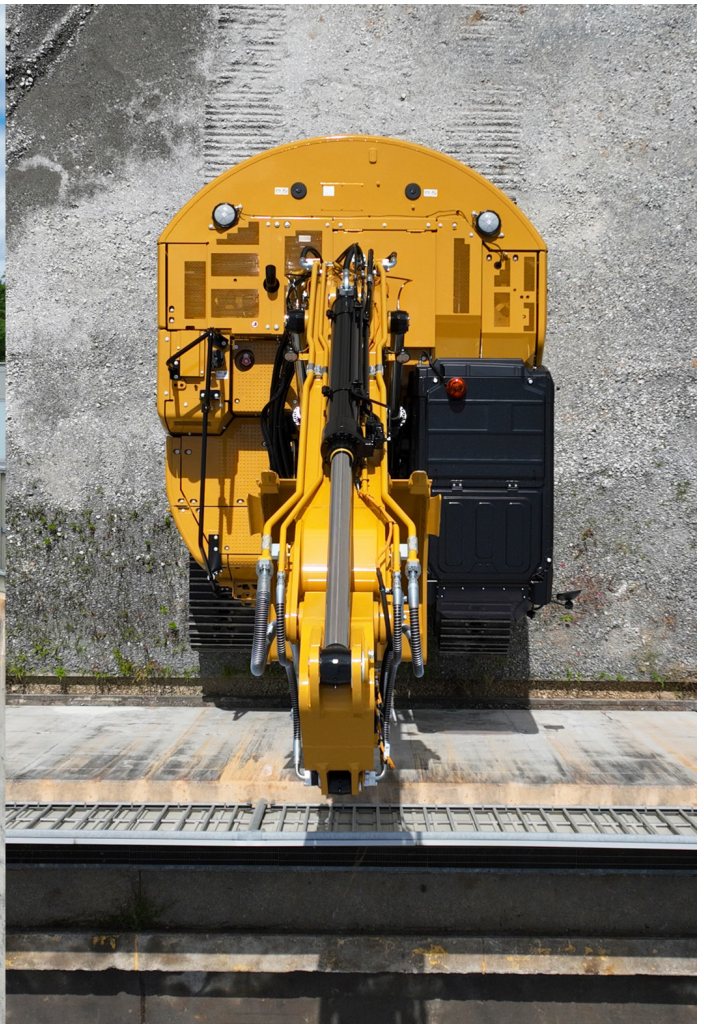
- Optional Cat Detect – People Detection helps protect the most valuable asset on any jobsite – people. The system uses smart cameras with depth sensors to provide the operator with visual and auditory alerts so he or she can take immediate action when a person is too close to the excavator.
- Optional Cat Command remote control enables equipment operators to work safely outside the machine when working in hazardous environments. Command offers the choice of handheld consoles\* (line-of-sight) or long-distance virtual stations (non-line-of-sight). Deep integration with machine systems enables efficiency and productivity by maintaining the use of in-cab technology\* features (Grade, Payload, Assist, etc.).
- 2D E-Fence prevents the excavator from moving outside of operator-defined set points; the system works with thumb and bucket combinations along with hammer, grapple, and clamshell attachments.
- Access 100% of daily maintenance inspection points from ground level – no need for you to climb on top of excavator.
- The standard Rollover Protective Structure (ROPS) cab meets ISO 12117-2:2008 requirements.
- The standard hydraulic lockout lever isolates all hydraulic and travel functions in the lowered position.
- Ground-level shut-off switch stops all fuel to the engine when activated and shuts down the machine.
- A rearview camera and a right-side-view camera are standard. Upgrade to 360° visibility and you'll easily visualize objects and personnel around the excavator in a single view.
- The latest service platform design in the front of the machine provides easy, safe, and quick access to upper service platform; the service platform steps use anti-skid punch plate to prevent slipping.
- Optional boom and stick lowering check valves prevent reverse flow, keeping your front linkage securely in place should the hydraulic system unexpectedly lose power.
- Brightly colored seatbelts allow easy recognition of properly utilized safety restraints.
- Enhance jobsite safety. Add a swing alarm to alert people when you're rotating from trench to stockpile and back again.

*\*Not all technology features are available on the Command Console and vary by model. Consult your Cat dealer for details.*



# REDUCED RADIUS CONFIGURATION

- The 325 Reduced Radius design allows for easy operation in urban environments, forests, and confined spaces – helping to minimize the risk of damage to surrounding structures.
- The 325 Reduced Radius configuration has a tail swing radius of 2030 mm (6.7 ft), which is more compact than the smaller size class Cat 313 Hydraulic Excavator.
- Maintain the power and efficiency of a full-sized excavator, paired with the flexibility needed for smaller jobsites.
- Delivering great stability for heavy lifting, enabling the use of heavy work tools – from 2.65 mt (5,840 lb) to 3.08 mt (6,790 lb) depending on configuration.
- Optional lifting points allow for easy transportation to the top of buildings, bridges, and other structures.
- Optional shovel crane helps monitor loads, following regulatory limits for lifting.
- Designed for demolition with special linkage, reducing the risk of bottoming out the bucket cylinder when using an optional concrete crusher in extreme angles.
- Standard undercarriage allows for transport on 2.8 m (9'2") width trailers, and can easily be configured to weigh less than 25 metric tons (55,120 lb) – as low as 24 mt (52,910 lb)
- Safety prioritized design for urban areas with an optional 360-degree camera and Cat Detect, helping to decrease the likelihood of jobsite accidents.
- Ideal for projects in crowded or developed urban areas where space is a premium, ensuring that work can proceed without disruption.



# TUNNELING CONFIGURATION

---

- The 325 Tunneling Excavator is a specially modified design to meet the harsh conditions of underground applications.
- Choice of Tunneling Mass excavation or Short reach front parts to provide high digging forces or work in tight areas.
- Reinforced upper and lower frames to match the toughest conditions found underground.
- All electrical harnesses connections are protected by extra silicone to avoid water entry.
- Simplified cab. Mounting points for fire extinguisher are offered from factory.
- Regulatory features such as extra flashlight for visibility and shovel crane for mass excavation to know load on hand.
- Safety features such as an optional 360° camera and 360° lighting.
- Machine protection including boom light covers and bucket cylinder guard sleeve.
- Standard hammer return filter protects the machine hydraulics in case of hammer seal failure.



- The Cat C4.4 engine meets U.S. EPA Tier 4 Final, EU Stage V, and Japan 2014 emission standards.
- Cat diesel engines are required to use ULSD (ultra-low sulfur diesel fuel with 15 ppm of sulfur or less) and are compatible\* with ULSD blended with the following lower-carbon intensity fuels\*\* up to:
  - 20% biodiesel FAME (fatty acid methyl ester)\*\*\*
  - 100% renewable diesel, HVO (hydrotreated vegetable oil) and GTL (gas-to-liquid) fuels.

Refer to guidelines for successful application. Please consult your Cat dealer or “Caterpillar Machine Fluids Recommendations” (SEBU6250) for details.

- Cat Grade technologies combine advanced guidance with optional automated machine control helping you reach grading targets while reducing fuel burn and greenhouse gas emissions by improving efficiency, jobsite productivity, and accuracy.
- Auto Engine Speed Control reduces unnecessary fuel burn and greenhouse gas emissions by allowing the engine to automatically go into idle mode when the machine is not working.
- Cat Payload for excavators provides on-the-go material weighing which helps reduce fuel burn by improving loading efficiency, jobsite productivity, and eliminating trips to the scale.
- Extended maintenance intervals not only reduce downtime but decrease the amount of fluid and filters that are replaced over the life of the machine.

- VisionLink displays the CO<sub>2</sub> emissions for monitored assets, calculated by fuel type for the Runtime Fuel Burned each day in a selected date range.
- Remote Flash minimizes downtime and maintenance time while keeping your asset running with maximum efficiency. Alerts for machine updates are sent virtually from your Cat dealer and updates can be deployed without a dealer technician needing to be onsite.

\* While Caterpillar engines are compatible with these alternative fuels some regions may not allow their use.

\*\* Tailpipe greenhouse gas emissions from lower-carbon intensity fuels are essentially the same as traditional fuels.

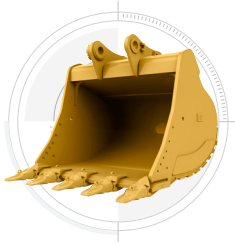
\*\*\* Engines with no aftertreatment devices are compatible with higher blends, up to 100% biodiesel (for use of blends higher than 20% biodiesel, consult your Cat dealer).



# INCREASE YOUR PRODUCTIVITY AND PROFIT WITH CAT ATTACHMENTS

You can easily expand the performance of your machine by utilizing any of the variety of Cat attachments. Each Cat attachment is designed to fit the weight and horsepower of Cat excavators for improved performance, safety, and stability.

## BUCKETS



## GRAPPLES



## ATTACHMENT TRACKING MADE EASY

The Cat PL161 Attachment Locator is a Bluetooth device that makes finding your attachments and other gear quick and easy. The excavator's onboard Bluetooth reader on your phone will locate the device automatically.

Save more time and energy with the available work tool recognition feature. A simple shake of the attached tool confirms its identity; it also ensures all the attachment settings are correct, so you can get to work quickly and efficiently.

## SECONDARY PULVERIZERS



## TILTROTATOR



## DO HARD-TO-REACH WORK

With 360° rotation and 40° side-to-side tilting action, a Cat tiltrotator will help you get complex work done faster. A new system upgrade from the factory allows the tool to work with Cat 2D Grade, Assist, Payload, and E-Fence. It includes factory-fit joysticks, but uses the standard cab monitor to display the tool and engage its SecureLock™ so you don't need to spend money on an extra monitor. It also works seamlessly with other brands with no additional hardware required. All you have to do is simply select "Third Party Tiltrotator System Installation" in the monitor, do the calibration, and get to work.

## VIBRATORY PLATE COMPACTORS



## HYDRAULIC HAMMERS



## PREVENT HAMMER WEAR AND TEAR

Protect your hammer tool from overheating and rapid wear. Auto hammer stop warns you after 15 seconds of continuous firing and then automatically shuts it off after 30 seconds – all to extend the tool's service life.

# TECHNICAL SPECIFICATIONS

See [cat.com](http://cat.com) for complete specifications.

ENGINE		
Net Power – ISO 9249	128.5 kW	172 hp
Net Power – ISO 9249 (DIN)	175 hp (metric)	
Engine Model	Cat® C4.4	
Engine Power – ISO 14396	129.4 kW	174 hp
Engine Power – ISO 14396 (DIN)	176 hp (metric)	
Bore	105 mm	4 in
Stroke	127 mm	5 in
Displacement	4.4 L	269 in³
Biodiesel Capability	Up to B20¹	
Emissions	Meets U.S. EPA Tier 4 Final, EU Stage V, and Japan 2014 emission standards.	

Net power advertised is the power available at the flywheel when the engine is equipped with fan, air intake system, exhaust system, and alternator with engine speed at 2,200 rpm. Advertised power is tested per the specified standard in effect at the time of manufacture.

¹Cat diesel engines are required to use ULSD (ultra-low sulfur diesel fuel with 15 ppm of sulfur or less) and are compatible\* with ULSD blended with the following lower-carbon intensity fuels\*\* up to:

- 20% biodiesel FAME (fatty acid methyl ester)\*\*\*
- 100% renewable diesel, HVO (hydrotreated vegetable oil) and GTL (gas-to-liquid) fuels.

Refer to guidelines for successful application. Please consult your Cat dealer or “Caterpillar Machine Fluids Recommendations” (SEBU6250) for details.

\* While Caterpillar engines are compatible with these alternative fuels some regions may not allow their use.

\*\* Tailpipe greenhouse gas emissions from lower-carbon intensity fuels are essentially the same as traditional fuels.

\*\*\* Engines with no aftertreatment devices are compatible with higher blends, up to 100% biodiesel (for use of blends higher than 20% biodiesel, consult your Cat dealer).

HYDRAULIC SYSTEM		
Main System – Maximum Flow – Implement	429 L/min (113 gal/min)	
Maximum Pressure – Equipment – Normal	35 000 kPa	5,075 psi
Maximum Pressure – Travel	35 000 kPa	5,075 psi
Maximum Pressure – Swing	27 500 kPa	3,988 psi

SWING MECHANISM		
Swing Speed	11.12 r/min	
Maximum Swing Torque	82 kN-m	60,360 lbf-ft

WEIGHTS		
Operating Weight	22 800 kg	50,300 lb
Standard undercarriage, Reach boom, R2.9B1 (9'6") stick, Heavy Duty Excavation (HDX) 0.90 m³ (1.18 yd³) bucket, 600 mm (24") triple grouser shoes and 4900 kg (10,800 lb) CR counterweight.		

SERVICE REFILL CAPACITIES		
Fuel Tank Capacity	313 L	82.7 gal
Cooling System	11.8 L	3.1 gal
Engine Oil	15 L	4 gal
Swing Drive	5.5 L	1.5 gal
Final Drive – Each	4.5 L	1.2 gal
Hydraulic System – Including Tank	230 L	60.8 gal
Hydraulic Tank	111 L	29.3 gal
DEF Tank	26 L	6.9 gal

DIMENSIONS		
Boom	Reach 5.7 m (18'8")	
Stick	Reach 2.9 m (9'6")	
Bucket	HDX 0.90 m³ (1.18 yd³)	
Shipping Height – Top of Cab	3070 mm	10.1 ft
Handrail Height	3180 mm	10.5 ft
Shipping Length	8680 mm	28.6
Tail Swing Radius	1780 mm	5.9 ft
Counterweight Clearance	1020 mm	3.3 ft
Ground Clearance	440 mm	1.3 ft
Length to Center of Rollers	3270 mm	10.8 ft
Track Length	4460 mm	14.7 ft
Track Gauge	2200 mm	7.3 ft
Transport Width – 600 mm (24") Shoes	2800 mm	9.2 ft
Transport Width – 790 mm (31 in) Shoes	2900 mm	9.6 ft

WORKING RANGES AND FORCES		
Boom	Reach 5.7 m (18'8")	
Stick	Reach 2.9 m (9'6")	
Bucket	HDX 0.90 m³ (1.18 yd³)	
Maximum Digging Depth	6600 mm	21.8 ft
Maximum Reach at Ground Level	9670 mm	31.8 ft
Maximum Cutting Height	10 930 mm	35.8 ft
Maximum Loading Height	8000 mm	26.3 ft
Minimum Loading Height	3080 mm	10.1 ft
Maximum Depth Cut for 2440 mm (8 ft) Level Bottom	6420 mm	21.1 ft
Maximum Vertical Wall Digging Depth	5820 mm	19.1 ft
Bucket Digging Force – ISO	148 kN	33,272 lbf
Stick Digging Force – ISO	103 kN	23,155 lbf

AIR CONDITIONING SYSTEM		
The air conditioning system on this machine contains the fluorinated greenhouse gas refrigerant R134a or R1234yf. See the label or instruction manual for identification of the gas.		
– If equipped with R134a (Global Warming Potential = 1430), the system contains 0.8 kg (1.8 lb) of refrigerant which has a CO <sub>2</sub> equivalent of 1.144 metric tonnes (1.261 tons).		
– If equipped with R1234yf (Global Warming Potential = 0.501), the system contains 0.75 kg (1.7 lb) of refrigerant which has a CO <sub>2</sub> equivalent of 0.001 metric tonnes (0.001 tons).		

SUSTAINABILITY		
Recyclability	98%	

# STANDARD AND OPTIONAL EQUIPMENT

Standard and optional equipment may vary. Consult your Cat® dealer for details.

UNDERCARRIAGE AND STRUCTURES	STANDARD	OPTIONAL
600 mm (24") triple grouser shoes	●	
Tie-down points on base frame	●	
Grease lubricated track	●	
Standard undercarriage		●
Long undercarriage		●
600 mm (24") HD triple grouser shoes		●
600 mm (24") triple grouser track shoes with bolt on rubber pad		●
600 mm (24") HD triple grouser track shoes with bolt on rubber pad		●
700 mm (28") triple grouser shoes		●
700 mm (28") HD triple grouser shoes		●
790 mm (31") triple grouser shoes		●
790 mm (31") HD triple grouser shoes		●
4900 kg (10,800 lb) CR counterweight		●
6500 kg (14,400 lb) RR Counterweight		●
6500 kg (14,400 lb) RR Counterweight (with lifting eye)		●
8300 kg (18,300 lb) CR counterweight		●
2980 mm (9'9") blade		●
3170 mm (10'5") blade		●
BOOM AND STICKS	STANDARD	OPTIONAL
5.7 m (18'8") Reach boom	●	
2.9 m (9'6") Reach stick	●	
5.7 m (18'8") HD Reach boom		●
5.7 m (18'8") HD Reach boom (with lifting eye)		●
2.9 m (9'6") HD Reach stick		●
CAB	STANDARD	OPTIONAL
ROPS	●	
Mechanical-suspension seat (Comfort only)	●	
Heated air-suspension seat (Deluxe only)	●	
Heated and ventilated air-suspension seat (Premium only)	●	
High-resolution 203 mm (8 in) LCD touchscreen monitor (Comfort only)	●	
Operator Protective Guards (OPG)		●
High-resolution 254 mm (10 in) LCD touchscreen monitor		●
Roller rear sunscreen		●
Cat® Stick Steer		●

HYDRAULIC SYSTEM	STANDARD	OPTIONAL
Boom and stick regeneration circuits	●	
Auto hydraulic warm up	●	
Auto two-speed travel	●	
Boom and stick drift reduction valve	●	
Hydraulic efficiency monitoring		●
ELECTRICAL SYSTEM	STANDARD	OPTIONAL
Two 1,000 CCA maintenance free batteries	●	
Programmable time-delay LED working lights	●	
LED chassis light, left-hand/right-hand boom lights, cab lights	●	
360° lighting		●
CAT TECHNOLOGIES	STANDARD	OPTIONAL
VisionLink™	●	
Remote Flash	●	
Remote Troubleshoot	●	
Work tool recognition and tracking (PL161)	●	
Cat Grade with 2D	●	
Cat Assist	●	
Cat Payload	●	
Operator Coaching		●
Cat Grade with 2D with Attachment Ready Option (ARO)		●
Cat Grade with 3D (single or dual GNSS)		●
Cat Grade 3D Ready		●
Cat Grade Connectivity		●
Cat Advanced Payload		●
Cat Tiltrotator (TRS) integration		●

(CONTINUED ON NEXT PAGE)

## STANDARD AND OPTIONAL EQUIPMENT (CONTINUED)

Standard and optional equipment may vary. Consult your Cat® dealer for details.

ENGINE	STANDARD	OPTIONAL
Cat® C4.4 single turbo diesel engine	●	
Three selectable modes: Power, Smart, Eco	●	
4500 m (14,760 ft) altitude capability with engine power derate above 3000 m (9,840 ft)	●	
50° C (122° F) high-ambient cooling capacity without de-rate	●	
-18° C (0° F) cold start capability	●	
Double element air filter with integrated pre-cleaner	●	
1 x 145 amp dual alternator		●
Electric fuel priming pump		●
Reversing electric cooling fans	●	
-32° C (-25° F) cold start capability		●
SERVICE AND MAINTENANCE	STANDARD	OPTIONAL
S-O-S <sup>SM</sup> ports	●	
Ground-level and platform-level engine oil dipsticks	●	
Integrated vehicle health management system	●	

SAFETY AND SECURITY	STANDARD	OPTIONAL
2D E-Fence	●	
Auto hammer stop	●	
Rear and right hand side view camera	●	
Ground-level engine shutoff switch	●	
Lockable disconnect switch	●	
Right-hand handrail and hand hold	●	
Signaling/warning horn	●	
Cat Command remote control		●
360° visibility		●
Swing alarm		●
Inspection lighting		●
Shovel crane package		●







オフロード法2014年  
基準適合



国土交通省  
超低騒音型建設機械

For more complete information on Cat products, dealer services and industry solutions, visit us on the web at [www.cat.com](http://www.cat.com).

Materials and specifications are subject to change without notice. Featured machines in photos may include additional equipment. See your Cat dealer for available options.

© 2025 Caterpillar. All Rights Reserved. CAT, CATERPILLAR, LET'S DO THE WORK, VisionLink, their respective logos, "Caterpillar Corporate Yellow," the "Power Edge" and Cat "Modern Hex" trade dress as well as corporate and product identity used herein, are trademarks of Caterpillar and may not be used without permission.

Based on the Labor, Safety and Health Laws in Japan, employer of small construction equipment are required to provide specific training for all operators on machines with machine weight less than 3 metric ton. For machines greater than 3 metric ton, operator needs to obtain operator license certification from a Government approved registered training school.

[www.cat.com](http://www.cat.com) [www.caterpillar.com](http://www.caterpillar.com)

AEXQ4141-01 (10-2025)  
Replaces: AEXQ4141-00  
Build Number: 07H  
(Japan)

