

TRAIN **THE** TRAINER

TRS NG

Jerome Perard – RailRoad & Fabricated WT Segment Specialist





SAFETY first.



QUALITY always.



VALUES every day.

TRS NG

TRS NG OVERVIEW

Agenda

- Product range & Nomenclature
- Product improvements
 - Performance
 - Reliability & Serviceability
 - High flow
 - Summary
- Compatibility
- Field concern

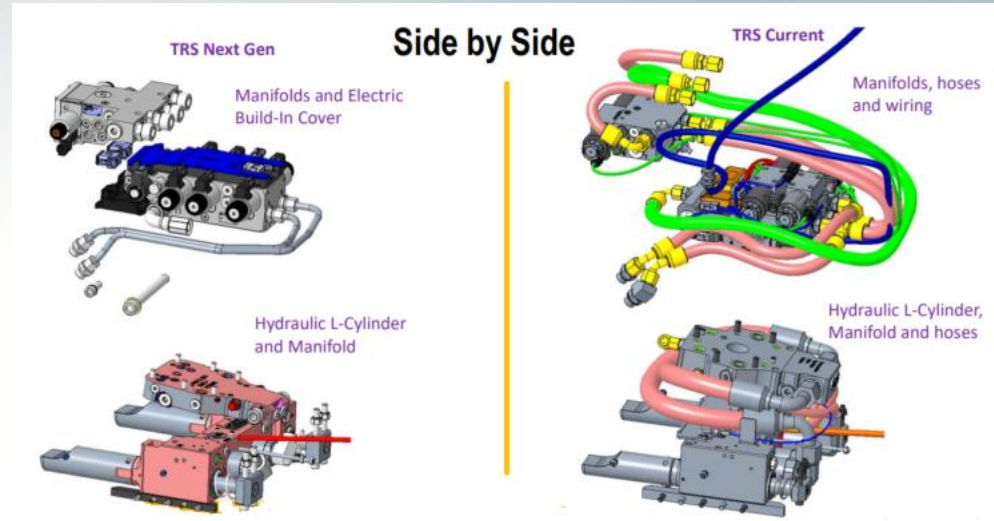
PRODUCT RANGE & NOMENCLATURE

- Phase I – Q2, 2024 (S interface products)
 - TRS12 (Former TRS10)
 - TRS12/14/18/23 NG
- Phase II – LH 2024 (TRS-CW, TRS-PG and TRS34-S)
 - TRS12 CW20-Q
 - TRS34 (336-340) – FF in Denmark

PRODUCT IMPROVEMENTS

Performance

- Pressure-compensated hydraulics
 - Parallel operation with precise control of Tilt and Rotation function
 - New hyd. set-up
- Hyd. Hoses replaced by tubes
 - Bigger diameter
- Other
 - Anti drift system (New Rotation sensor & software)
 - Zero position mark on the frame
 - TRS QC management



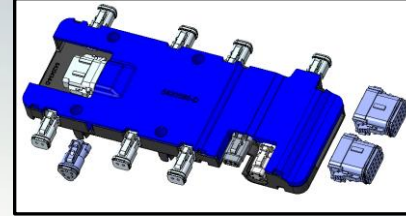
- Improve controllability
- Improve performance
- Less Fuel consumption

PRODUCT IMPROVEMENTS

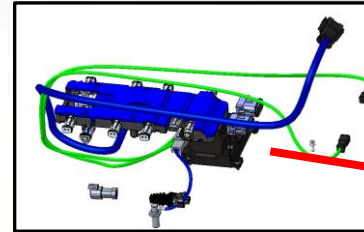
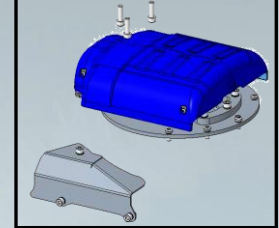
Reliability & Serviceability

- Protection and routing of hyd. and electronics components
 - Electrical harness is clipped
 - Harnesses and cables protected
 - Plastic cover for easier maintenance
 - Hoses replaced by tubes
- TCU software has a remote flash capability
- GS520
 - Easier installation and better protected
 - Harness mounted
- RPS code standard and integrated

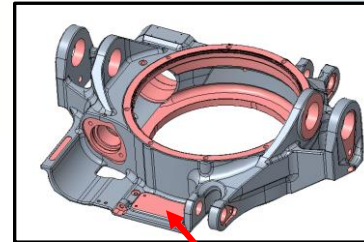
Electric Build-In Cover



Covers and Films



TCU



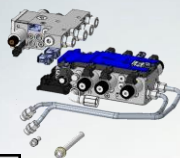
Position GS520 (Tilt)

- Lower O&O cost

PRODUCT IMPROVEMENTS

High flow (Performance)

TRS Next Gen



| Double extra functions (2 ^E) Max 250 Bar | | |
|--|------------------|--------------|
| Function | Flow Performance | Pressure |
| Extra 1 | 100L/min | Max. 250 Bar |
| Extra 2 | 100L/min | Max. 250 Bar |

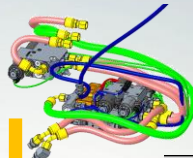
| High Flow (HF) Max 250 Bar (Std. for TRS HCS top/bottom) | | |
|--|------------------|--------------|
| Function (requires SEA update APU2024) | Flow Performance | Pressure |
| Extra 1 (grapple Module) | 25L/min | Max. 250 Bar |
| Extra 2 | 200L/min | Max. 250 Bar |

| Separate connected high flow (HFS) | | |
|------------------------------------|------------------|--------------|
| Function | Flow Performance | Pressure |
| Extra 1 | 100L/min | Max. 250 Bar |
| Extra 2 | 250L/min | Max. 350 Bar |

Requires additional
HP lines on the
machine

- Increase oil flow capability
- Use bigger WT underneath the TRS

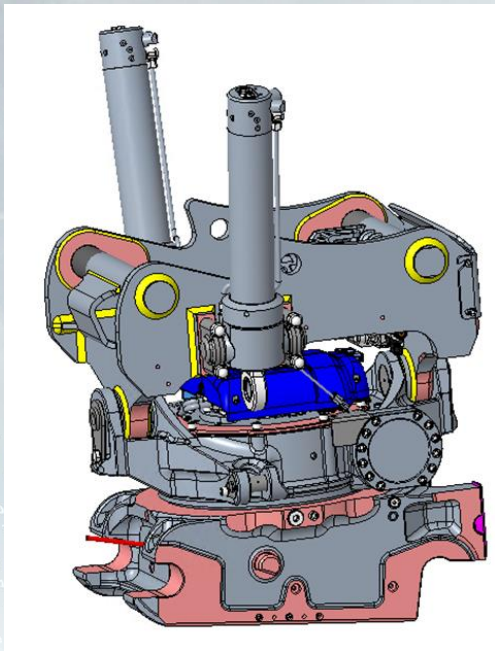
TRS Current



| Double extra functions (2 ^E) Max 250 Bar | | |
|--|------------------|--------------|
| Function | Flow Performance | Pressure |
| Extra 1 | 60L/min | Max. 250 Bar |
| Extra 2 | 60L/min | Max. 250 Bar |

| Separate connected high flow (HFS) | | |
|------------------------------------|------------------|--------------|
| Function | Flow Performance | Pressure |
| Extra 1 | 60L/min | Max. 250 Bar |
| Extra 2 | 200L/min | Max. 350 Bar |

SUMMARY



- Improved controllability
- Less fuel consumption / Better efficiency
- Lower O&O cost

COMPATIBILITY

- Machines produced with APU2024 software update
 - Can handle Legacy TRS and NG TRS
 - The machine software will recognize automatically the type of TRS
- Machines produced before APU2024 with B6 ECM
 - The machines can be upgraded with APU2024 software
 - Can handle Legacy and NG TRS
- Machines with B5ECM
 - Legacy TRS only
- F-series WHEX and THEX
 - Legacy TRS only

FIELD CONCERN

Status update

- TRS drift
 - Kit PN 647-0611 (Legacy TRS)
- Coupler WHEX – HP1
 - Auto-calibration starting with the TRS coupler activation
 - CPI open: #533135
 - Test software available End of October.
 - Test to be done with PON NL and BM BE in November
 - To be added to the APU2024 software release
- Default settings
 - Documentation for default parameters being updated
 - Increase Tilt max current is being discussed with Rototilt
- Machine coupler actuation
 - CPI open: #530409 (no timeline)
 - Standardize the machine software logic based on WHEX machine (machine switches to TRS coupler mode when machine coupler is closed & TRS detected & operator has validated the pop-up message).
 - THEX, currently switch from machine to TRS coupler as soon as the TRS detected



TRAIN **THE** TRAINER

THANK YOU

